



Easy, Accurate, Trusted.

User Manual

4990 Pearl East Circle Suite 300 Boulder CO 80301 USA

855-426-4639

support@webscaninc.com

www.webscaninc.com

Congratulations on the purchase of your Webscan barcode verifier! With this system, you can reach a new level of quality assurance. This manual will guide you in using your Webscan barcode verifier and in fully understanding the available features. In addition, it will assist you in understanding the verification results shown on the display and printed reports.

All Webscan verifiers are operated by the same TruCheck™ Software, but some operating instructions will differ based on the particular unit that you have. This manual will point out how to operate each unit. For information about a specific symbology, please see the “Symbology Specific Variations” entry for that symbology.

CONTENTS

- 1. Getting Started5
 - 1.1 Welcome! 5
 - 1.2 Software Installation 6
 - 1.3 Hardware Installation..... 6
 - 1.4 Software Updates 7
 - 1.5 PostNet/IMB Software Options 8
 - 1.6 MaxiCode Software Additions 9
- 2. Becoming Familiar with a Camera Based Verifier 10
 - 2.1 Introduction to the Home Screen while using an Imager Based Verifier 10
 - 2.2 Focusing the FlexHite DPM and DPM Tower Verifiers 11
 - 2.3 Selecting Regions (Imager units only)..... 11
- 3. How to Verify a 1D Barcode..... 13
- 4. How to Verify a 2D Barcode..... 14
- 5. Examining Results 15
 - 5.1 Tabs One-by-One 15
- 6. Becoming Familiar with a Laser Based Verifier..... 20
- 7. User Interface Features 22
 - 7.1 The File, Options, and Help Menus 22
 - 7.2 Toolbar Buttons 24
- 8. Selecting Lighting Options for Labels and DPM Applications 25
- 9. Calibration 27
 - 9.1 How to Calibrate your Laser Verifier 28
 - 9.2 How to Calibrate your Camera Verifier 29

10. Settings	30
10.1 1D Settings	30
10.2 2D Settings	34
10.3 Report and Print Options 1D and 2D	40
10.4 User Passwords	42
10.5 User/Job Information	42
10.6 Revision Log	42
10.7 About Window	43
11. Explanation of Grading Standards and their Parameters	44
12. Using Multi-Mode.....	55
13. Safety and Regulatory Compliance and Compliance Statement	59
13.1 Laser Safety Information	59
13.2 CDRH Compliance Statement	59
13.3 FCC Class “A” Statement	60
13.4 Routine Care and Maintenance	60
13.5 Engineering Specs	60
14. Compliance to Global and Industry Standards	62
15. Repairs and Other Services Available from Webscan.....	63
15.1 Webscan Service	63
15.2 Repair/Upgrade	63
15.3 Troubleshooting	63
15.4 Return Policy	63
15.7 FCC Class “A” Statement:	64
15.8 Purchasing a calibration card	64
15.9 Seminar Service	65
15.10 Validation Protocol	66
16. Symbology Specific Verifications	67

Revision 1.13.9

1.1 WELCOME!

Congratulations on the purchase of your TruCheck™ barcode verifier! With this system, you can reach a new level of barcode quality assurance.

Please note that Webscan is now part of Cognex Corporation.

The Webscan TruCheck™ family of laser and 2D imager-based barcode verifiers evaluate 1D and 2D barcodes and grade them according to international and industry standards established by ANSI, ISO/IEC, CEN, GS1 and other organizations. Detailed diagnostic information is available on screen and reports of verification results are produced for printout or electronic archival.

The TruCheck™ system is as easy to use as it is powerful. The main features of the system are:

- Accurate barcode verification according to global standards
- 2D Imager with integrated illumination or Laser-based barcode profiler (scanner)
- Repeatable and accurate results
- Calibrated and traceable to NIST standards
- Accurate implementation of internationally recognized barcode verification algorithms (ISO/IEC/AIM/GS1)
- Intuitive User Interface
- Detailed reporting
- Storage of verification results in Adobe PDF™, HTML, MS Excel, and CSV
- Consistent results independent of operator training or skill

This manual will guide you in using the TruCheck™ verifier and in fully understanding the available features. In addition, it will assist you in understanding the verification results shown on the display and printed reports.

**Webscan and TruCheck are trademarks of Cognex Corporation.*

1.1.1 PACKAGE CONTENTS

Check the verifier package for the following items:

- TruCheck™ Imager or Laser-based verifier unit
- TruCheck™ Software Installation CD (can also be downloaded from Webscan's website)
- Power Supply (if applicable)
- Quick Set Up Sheet (if applicable)
- One of several available Calibration Cards

If any of the above items are missing, please contact Webscan. Contact information can be found in [15.2 Repair/Upgrade](#) section near the end of the manual.

NOTE: The calibration card is usually an optional, orderable item and might not be included in your package. However, a calibration card is required for proper operation of the TruCheck™ barcode verifier, so be sure that you have one before attempting to use the barcode verifier for the first time.

1.2 SOFTWARE INSTALLATION

TruCheck™ USB installation program takes you through the installation with instructions on every screen.

Before installing TruCheck™:

- Close all other applications.
- Make sure the TruCheck hardware is not plugged into the computer.

NOTE: If the TruCheck™ hardware is plugged in before or during the software installation, the computer will install the TruCheck™ USB as an “unknown” device and it will not function.

Log into your computer with administrator privileges if you are installing on Windows 7, 8, 10, or Vista.

Make sure that the .NET framework version 3.5 is installed on the PC. If the framework is not installed on the PC, you can do so by browsing to the “dotNET Installer” folder on the CD and running “dotNET Installer v3.5” executable. Make sure to use the Windows Update function to check for update information pertaining to the .NET framework.

To install TruCheck Software: Insert the TruCheck™ CD-ROM into the CD-ROM drive. The installation program should start automatically. If it does not start, locate your CD-ROM drive in Windows Explorer and double-click the Setup.exe program at the top-level of the CD-ROM.

NOTE: The TruCheck software can also be downloaded from our website, just like a software update. This is especially useful for computers lacking a CD reader. See section [1.4 Software Updates](#) below.

Follow the on-screen prompts to complete the installation.

1.3 HARDWARE INSTALLATION

The following information shows the proper setup procedures for your new TruCheck™. Before proceeding, locate the verifier and any accessories you purchased.

NOTE: The TruCheck™ software should already be installed in accordance with the preceding section of this manual before plugging in the TruCheck™ hardware to the computer.

Please connect the power supply cable to the cable coming out of the verifier with the barrel connector. Next, plug the power supply into the AC outlet.

Connect the USB connector directly to a USB port on the computer. The USB port on the computer must support USB 2.0.

Follow the on-screen prompts to complete the hardware installation. Once the USB cable is attached to the computer, you should see the “Found New Hardware” dialogue. With laser verifiers, you will be prompted twice. Wait for the “Found new hardware, your hardware is installed and ready to use” window to pop up.

If prompted that the driver has not passed Window’s logo testing, select “continue anyway”.

If prompted for the location of the drivers or any other files required during installation of the hardware drivers, please use the following folders: the “Drivers” folder on the CD or the path “C:\Program Files\Webscan Inc\TruCheck\Drivers”

1.3.1 COMPUTER AND SYSTEM REQUIREMENTS

Minimum Hardware Requirements:

- A Windows-based PC running an Intel Core 2 or iSeries processor (i.e. Core i3, i5, i7) or equivalent.
- 2GB RAM minimum, 4 GB RAM recommended
- Hard drive with at least 200 MB free space
- Screen resolution 1024x768 recommended - 800x600 minimum
- Embedded USB 2.0 (system will not work with USB 1.0, USB 1.1, or some USB 2.0 add on cards) Direct connection to a PC USB 2.0 'A' connector is recommended, not through an external USB hub.

System Requirements:

- Windows 10, Windows 8, Windows Vista, or Windows 7 installed. (Windows XP may be used in certain circumstances, but specific Windows XP drivers must be copied over the drivers that are installed by default). It is recommended that the latest service pack and all critical updates for Windows are loaded and configured before installing the Webscan application.
- Dot Net 3.5 SP1 must be installed and activated on the machine.

For Best Performance:

- Minimize or eliminate other USB data intensive applications before running the TruCheck software (i.e., applications streaming USB audio or video).

1.4 SOFTWARE UPDATES

Software Updates are available online at www.webscaninc.com under the Resources tab. Select "Software Update Request" and fill out the request form. You can also contact Webscan Customer Service to request the upgrade by e-mail at support@webscaninc.com.

We recommend joining our mailing list or following us on Facebook or Twitter to receive update notifications.

Email marketing@webscaninc.com to subscribe to our mailing list.



<http://www.facebook.com/webscaninc>



<http://www.twitter.com/webscaninc>

1.5 POSTNET/IMB SOFTWARE OPTIONS

Intelligent Mail barcodes are used in the USPS mail stream to increase the efficiency of deliveries. Intelligent Mail barcodes combine routing ZIP code information and tracking information into a single 4-state code. It encodes data from POSTNET and PLANET barcodes into a single barcode while providing a greater range of tracking data.



Intelligent Mail Barcode (IMB) 4 State



POSTNET Barcode

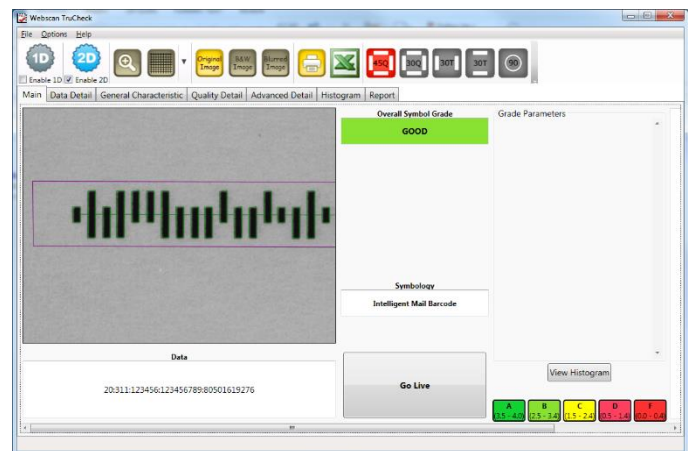
POSTNET barcodes encode a ZIP code or ZIP+4 code into half and full-height bars. Most often the delivery point is added, usually being the last two digits of the address or PO Box number. In 2013, POSTNET barcodes were replaced with Intelligent Mail barcodes (IMB) by the USPS. IMB symbols encode data in 4-state bars which can be one of: tracker, descender, ascender, or full height bars.

Correctly printing IMB symbols is critical for commercial mailers, as the USPS imposes penalties (in the form of higher postal rates, or non-approval of mail systems) for non-conforming symbols. However, it is almost impossible to know if an IMB system will meet USPS requirements. Webscan barcode verifiers fill this void by applying tests to IMB symbols according to requirements specified in USPS-B-3200.

Support for Postnet and Intelligent Mail Barcode (IMB) is available as an optional feature in Webscan barcode verifiers. To enable this feature, a license file must be purchased and loaded into the verifier unit (under the Help Menu, Activate Feature). The license file is tied to the "Board Serial Number" found in the Help→About window in the software.

Postnet and IMB symbols are verified in accordance with USPS-B-3200 and Merlin* test criteria and reported with Pass (meets USPS requirements), Good (does not pass all USPS-B-3200 requirements but does pass Merlin test criteria), Warning (does not pass all USPS-B-3200 requirements and generates a "Warning" message under "Merlin" test criteria), or Failure (does not pass all USPS-B-3200 requirements and generates a "Failure" message under "Merlin" test criteria).

A visual representation of each passing and failing feature of the symbol is shown on the results screen and itemized in the report for each bar of the symbol. Bar spacing, rotation, minimum and maximum height, minimum and maximum width, bar continuity, pitch, clear zone reflectance, and symbol skew, are all graded and reported.** Also, the orientation of the symbol (forward or backward/upside down), including mirror image, is automatically detected and reported.



* Merlin test criteria are not published by USPS and have been derived according to the best available information.

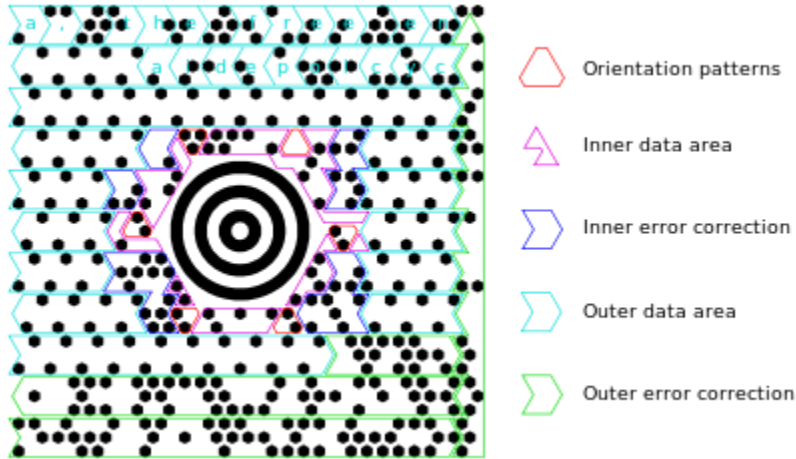
** Decoding method is not specified by USPS to interpretation of bar orientation and other parameters are subject to Webscan's implementation.

Please contact support@webscaninc.com for more information and assistance in setting up your software.

1.6 MAXICODE SOFTWARE ADDITIONS

Support for MaxiCode (UPS Barcode) is available as an optional feature. To enable this feature, a license file must be purchased and loaded into the verifier unit (under the Help Menu, Activate Feature). The license file is tied to the "Board Serial Number" found in the Help→About window in the software. MaxiCode is verified in accordance with ISO/IEC 16023 and ISO/IEC 15415, with some necessary modification documented by ISO/IEC JTC1/WG1 committee.

Please contact support@webscaninc.com for more information and assistance in setting up your software.



MaxiCode is a 2D hexagonal grid symbology. "MaxiCode" must be selected in the "Type of Code" section of the settings menu to decode MaxiCode symbols. Unlike most other barcoding symbologies, all MaxiCode symbols have a necessary specified size. Magnification or shrinkage of the symbol can cause a symbol to become unreadable, even if all elements are properly sized relative to each other. Magnification is not a graded parameter; however, magnification percentage will be reported in the General Characteristic tab, along with a warning if the symbol is of a size not allowed in the specification.

Data in MaxiCode symbols is encoded across 3 different channels, each with its own independent error correction budget, and each with a different intended interpretation. These three channels are referred to as the high priority message, and the first and second low priority messages. The error detection and correction information for each channel will be listed separately in the general characteristics tab.

More information in section [16.12 Maxicode](#).

2. BECOMING FAMILIAR WITH A CAMERA BASED VERIFIER

Before we begin, you may need to calibrate your verifier. For more information on calibration, please refer to 9. [Calibration](#).

2.1 INTRODUCTION TO THE HOME SCREEN WHILE USING AN IMAGER BASED VERIFIER

Notice the large "Go Live" button. When clicked, the camera will capture live images, which will be shown in the main window. This image is useful for positioning the imager over the bar code that you wish to verify. Place the imager over the symbol to verify.

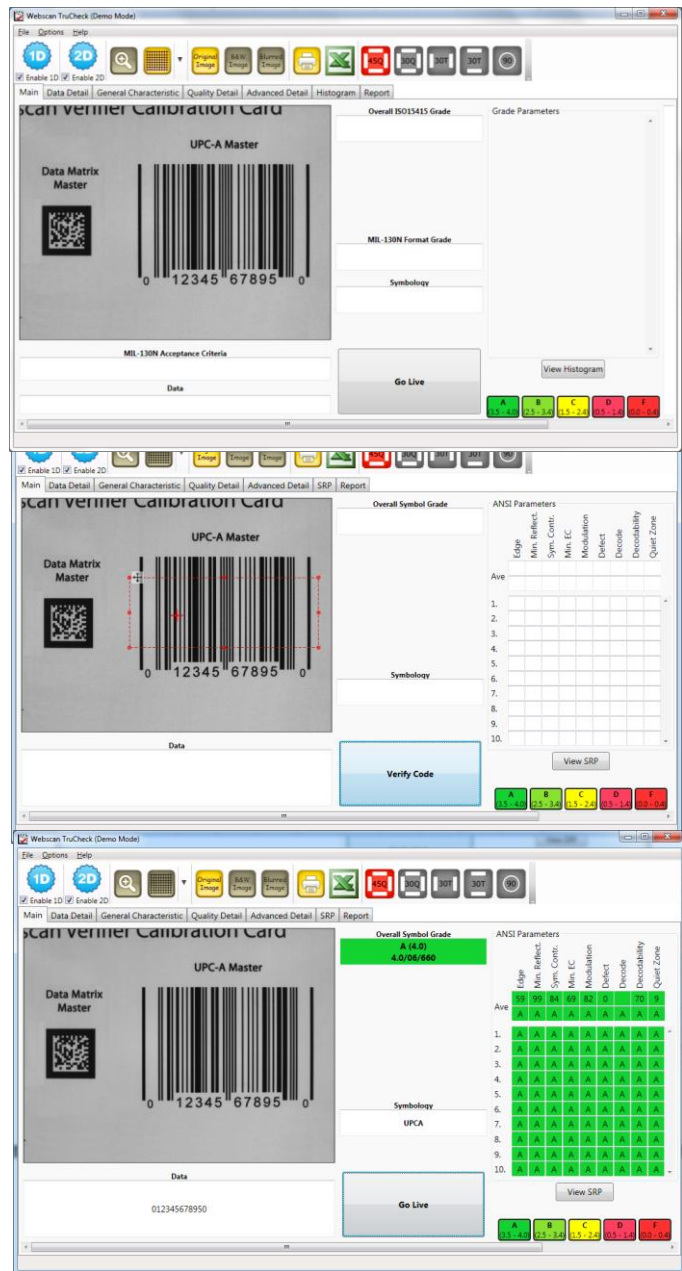
NOTE: The "Start" button on the imager will do the same thing as clicking the "Go Live" button.

If more than one code is in the field of view, you can draw a box around the code you want to verify. For more information, please see [2.3 Selecting Regions](#).

NOTE: Holding the imager with your right index finger on the "Start" button and the cable away from you will make it easier to aim the verifier and position it over the symbol to verify.

You will notice that the "Go Live" button now says "Verify Code". When the bar code is positioned correctly, click on that button again to begin the verification.

After successful verification, you should see a similar screen. The main screen features a static image of the symbol verified. The center portion contains the overall grade and barcode type. The quality parameters are listed to the right. Below the main screen is a box showing the encoded data. Depending on the symbology and grading standard, more or different detail will be displayed. The tool bar buttons and tabs are useful for in-depth analysis of barcodes and will be explained later in the [5. Examining Results](#) section.



2.2 FOCUSING THE FLEXHITE DPM AND DPM TOWER VERIFIERS

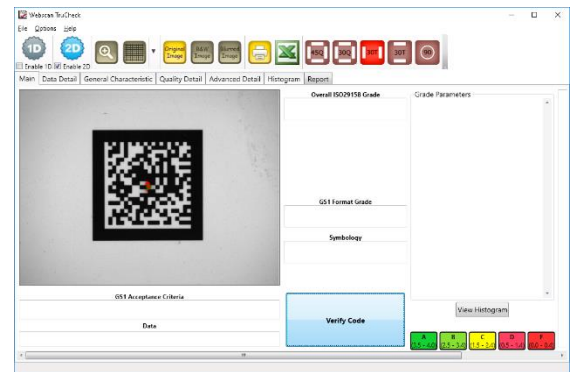
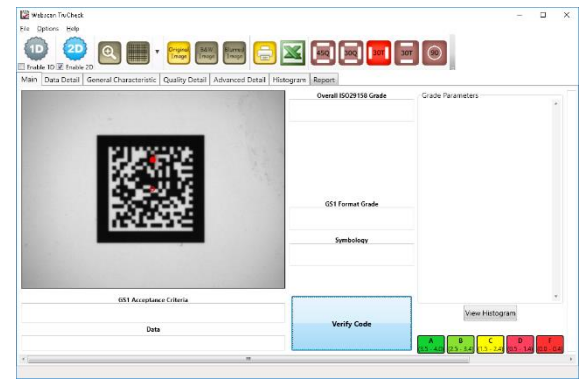
The adjustable height “TruCheck FlexHite DPM” and “TruCheck DPM Tower” are equipped with an adjustable height feature that is guided by a patented laser focus indicator. Prior to verifying, the verifier must be adjusted to the proper height above the target to ensure proper focus. Note that you are not actually focusing the imager, but you are positioning the imager at the correct height above the barcode so that the barcode is located at the “focal plane” of the imager.

Place the symbol directly under the verifier and press the “Go Live” button. A live image will appear on the screen. You will see a red “target” circle in the center of the image window. Additionally, an image of the aiming laser, called an “indicator spot” will appear somewhere on the image along the vertical center axis. Note that it is possible for the indicator spot to fall outside the field of view of the camera so you may need to adjust the height of the imager some amount before it begins to appear in the image window.

Carefully rotate the handle on the top of the verifier until the indicator spot is in the same position as the circle at which point the circle turns green. The unit is focused when the target circle is depicted in green.

In some cases, the reflective properties of a part may prevent the position of the aiming laser from being detected correctly. Furthermore, an obstruction may block the optical path of the laser to the part. In these cases, the target circle will not turn green, even when the height is adjusted to the correct focus position.

If you attempt to verify when the target circle is still red, you will be prompted to focus by a “Focus Warning” pop-up window. This window provides the option to “Verify Anyway” which is provided as a way to override the focus indicator requirement in cases when the indicator spot is physically blocked by a part of a real object on which a barcode is to be verified. A message on the report “Focus check was overridden” indicates that a verification was performed by selecting “Verify Anyway”. Except in specific circumstances, you should always achieve the correct focus position and not use the “Verify Anyway” option.



2.3 SELECTING REGIONS (IMAGER UNITS ONLY)

Specifying regions in the live image may be required for the following reasons:

- Multiple codes in the field of view
- Defining a section of a linear code
- In multi-mode, identifying the regions in a particular label format to be verified
- If the code is off center (see note)
- Speed up the verification process on verifiers with large fields of view; defining a small sampling area will increase the speed.

If you do not define a region, the whole image will be used.

In order to define a region, position your cursor where you want the region to start, hold the left mouse button down and begin drawing a box by moving the mouse. Release the button when you are done.

NOTE: When defining a region on 1D linear code draw your region within the symbol. If the region extends outside of the code, the verifier will attempt to scan that region, resulting in un-decoded scans. In the 1D settings menu, you may optionally select linear auto detect and the selected region can extend beyond the code without affecting the grade. If no region is selected, "Linear Auto Detect" will automatically be used for linear bar codes so that areas within the image that are above and below the barcode will not be graded as "F".

For 2D matrix symbols and linear stacked symbols, the region should be drawn surrounding the entire code. The verifier will need the entire finder pattern, including quiet zones, within the selection to properly grade the code.

Note that for linear symbols, the verifier will examine areas outside of the region selected in order to properly find and grade quiet zones. The region does not limit the verification to ignore areas outside, which might otherwise lead to wrong or misleading grade results.

Note, that it is recommended to verify symbols at or near the center of the field of view. Some materials reflect light from different incident angles differently than a purely diffuse material. In these cases it is possible to obtain different symbol contrast and/or modulation results when the symbol is away from the center of the field of view. Consistent symbol placement will increase consistency of results.

3. HOW TO VERIFY A 1D BARCODE

We'll use a UPC-A symbol as an example when verifying linear barcodes.

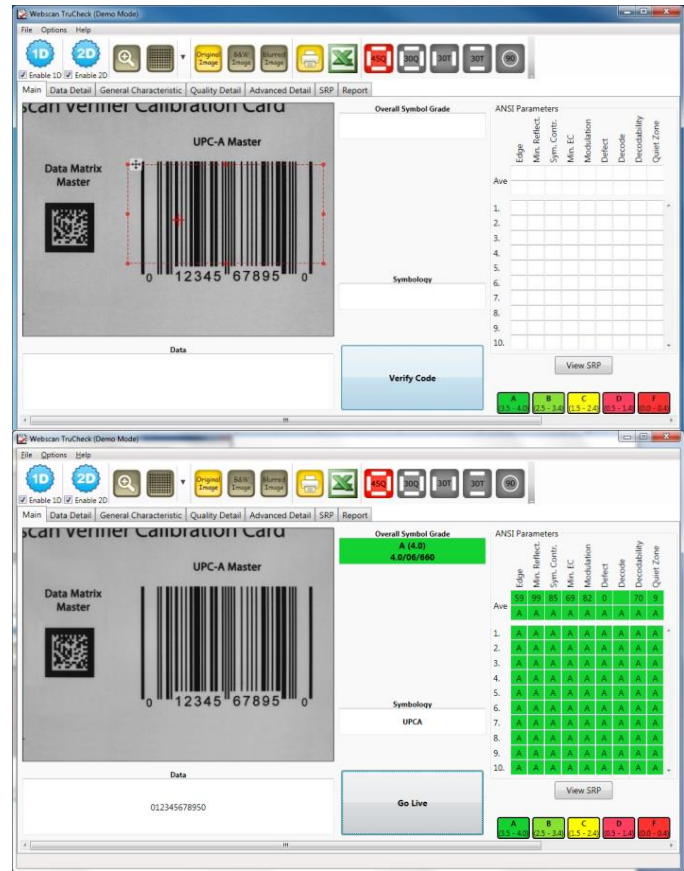
Press the large "Go Live" button on your user interface or the start button on your verifier, whichever you prefer. When "Live", you will see an image on the display. Position the red target shown on the main screen in the center or close to the code.

In this example, a UPC code is placed in the field of view with a camera-based verifier.

A region will need to be drawn around the UPC code.

Next, select the large grey "Verify Code" button.

This image represents a successfully graded 1D barcode.



NOTE:

- On both camera and laser-based hand-held verifiers, positioning is made easier if the cable is facing away from the user. This creates an image that is oriented "correctly" (top of image corresponds to moving "up").
- When using a camera-based verifier with a large field of view like an Omni or Tower, users may want to define regions as explained in [2.3 Selecting Regions](#).
- The orientation of the live image may be adjusted using "Live View Options" in Settings. The "Mirror Y" option is often helpful with TruCheck Omni models, but this depends on personal preference of the user.
- The tool bar buttons and tabs are useful for in-depth analysis of barcodes and will be explained later in the [5. Examining Results](#) section.

4. HOW TO VERIFY A 2D BARCODE

This section refers to 2D Matrix symbologies such as Aztec, Data Matrix, QR, and optionally MaxiCode and Postnet codes.

**If you want to see information pertaining to a particular type of symbol, refer to the [2.3 Selecting Regions](#) section of this manual.*

To verify a 2D symbol, first click on the "Main" tab. Once there you should see the "Go Live" button again. Click on it and center your symbol in the screen.

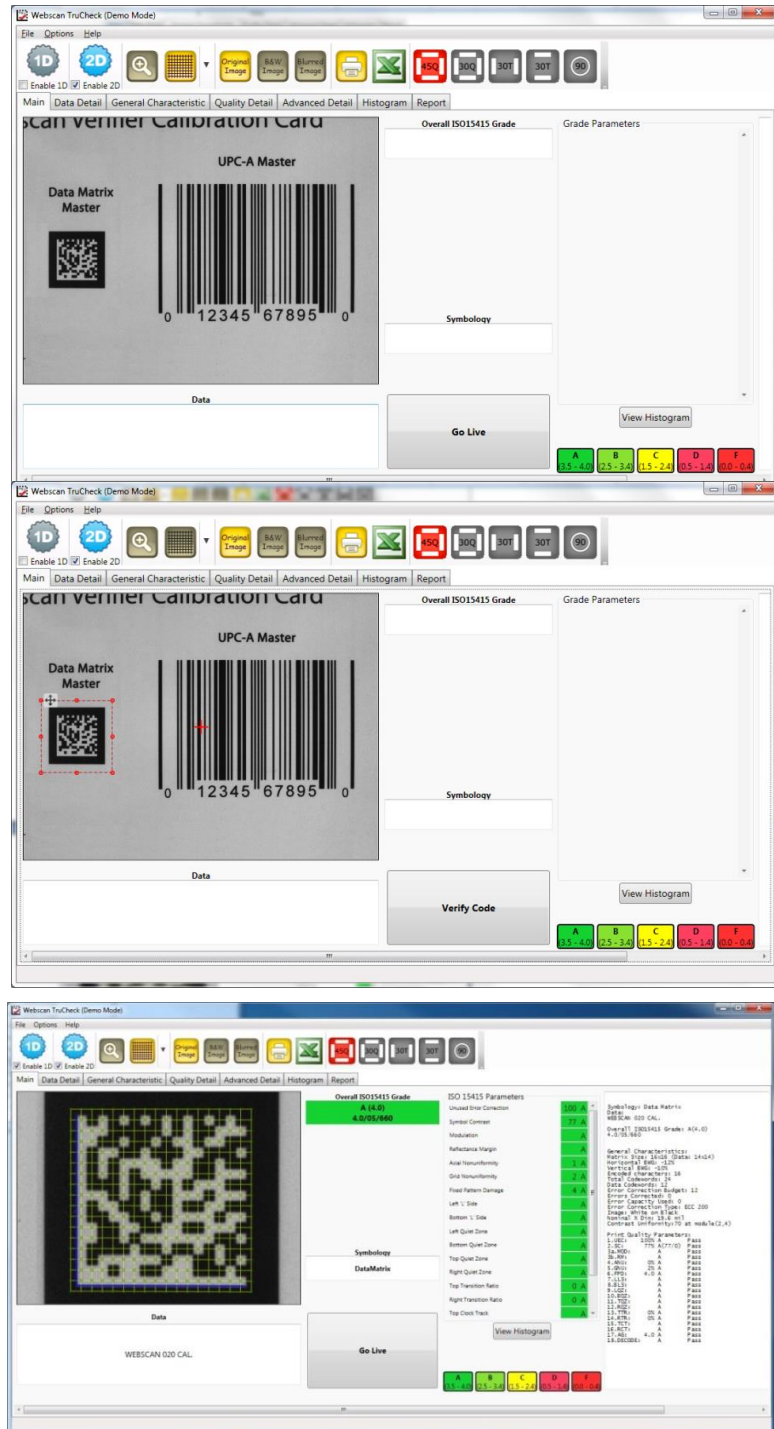
Once you have selected "Go Live", a red cross indicating a target will appear. Please try to place the symbol you wish to verify as close to that target as possible.

NOTE:

- If multiple codes are present, you will need to draw a region around the desired symbol.
- The region must be drawn around the outside perimeter of the code including quiet zones. More information on properly defining regions is explained in [2.3 Selecting Regions](#).

Once you have made your region selection (if required), hit the "Verify Code" button or press the "Start" button on the verifier to begin verification.

This screen shot is representative of a successful 2D barcode verification. Depending on grading and application standards, additional detail will be displayed.



NOTE: The tool bar buttons and tabs shown on the screen are useful for in-depth analysis of barcodes and will be explained next in the [5. Examining Results](#) section.

5. EXAMINING RESULTS

In this section, we will review the software tools provided that would aid you in analyzing your verified barcodes.

5.1 TABS ONE-BY-ONE

DATA DETAIL

Click on the "Data Detail" tab

When viewing this tab, all of the data content of the symbol is shown. Detail depends on symbology and application standards selected.

For example, the first screen shows a 1D code with the GS1 data parsing selected. The second screen shows a 2D Data Matrix with encoding information.

When a data checking failure occurs, a message will indicate the cause of the failure. For example, if a check digit is incorrect, a message will indicate the expected check digit value. When an error is detected, it is reported and the parsing is stopped.

Main	Data Detail	General Characteristic	Quality Detail	Advanced Detail	SRP	Report
Data 012345678950						
Data Format Check						
GS1 Data Format: PASS						
GTIN 01234567895 PASS						
Chk Digit 0 PASS						

Main	Data Detail	General Characteristic	Quality Detail	Advanced Detail	Histogram	Report
Data WEBSCAN 020 CAL.						
ASCII Values 087 069 066 083 067 065 078 032 048 050 048 032 067 065 076 046						
Data Matrix Codewords E6 E3 E0 CA 8F A9 3D 26 24 66 4A 2F 73 C2 A3 5A 91 EA 3D D5 E7 9E E2 64 *Fixed by Error Correction						

GENERAL CHARACTERISTICS

Click on the "General Characteristic" tab.

This section will show you physical characteristics of the barcode you verified.

For example, the first screen shows characteristics of a 1D UPC barcode.

The second screen shows characteristics pertaining to a 2D Data Matrix barcode. The "Contrast Uniformity" value, which is important for verifying conformance with ISO/IEC 15426-2 is also shown in this section.

Some of the contents of this section depends upon the symbology and selections in Report settings (such as traditional parameters and ECC Details, etc.)

Main	Data Detail	General Characteristic	Quality Detail	Advanced Detail	SRP	Report
General Characteristics						
BWG 13%						
BWG +1.7 MIL						
Magnification 102%						
Nominal X Dim 13.2 mil						
Inspection Zone Height 872 MILS						

Main	Data Detail	General Characteristic	Quality Detail	Advanced Detail	Histogram	Report
General Characteristics						
Matrix Size 16x16 (Data: 14x14)						
Horizontal BWG -12%						
Vertical BWG -10%						
Encoded characters 16						
Total Codewords 24						
Data Codewords 12						
Error Correction Budget 12						
Errors Corrected 0						
Error Capacity Used 0						
Error Correction Type ECC 200						
Image White on Black						
Nominal X Dim 19.6 mil						
Contrast Uniformity 70 at module(2,4)						

QUALITY DETAIL TAB

Click on the "Quality Detail" tab.

The measured quality parameters are shown in this section. The formal grade is listed here. Linear barcodes graded according to ANSI/ISO will have each individual scan shown. Different symbologies and quality grading standards will display pertinent data here.

For example, the left screen below shows characteristics of a 1D UPC barcode. The second screen on the right shows characteristics pertaining to a 2D Data Matrix barcode graded according to ISO 15 415. Detailed explanation on the grading standards can be found in [11. Explanation of Grading Standards and their Parameters](#).

Main	Data Detail	General Characteristic	Quality Detail	Advanced Detail	SRP	Report							
ANSI/ISO grade: A (4.0) 4.0/06/660													
ANSI/ISO Parameter Avg Values													
1	EDGE	59	A	PASS									
2	Reflectance Light / Reflectance Dark (R1/Rd)	85/0	A	PASS									
3	Symbol Contrast (SC)	85%	A	PASS									
4	Minimum Edge Contrast (MinEC)	71%	A	PASS									
5	Modulation (MOD)	83%	A	PASS									
6	Defect (Def)	1%	A	PASS									
7	Decode (DCD)	10/10	A	PASS									
8	Decodability (DEC)	73%	A	PASS									
9	Minimum Quiet Zone (MinQZ)	9	A	PASS									
Individual Scan Results													
Scan#	Edge	MinRef1	SC	MinEC	MOD	DEF	DECODE	DEC	QZ	LEFT QZ	RIGHT QZ	Scan	Grade
1.	A	A	A	A	A	A	A	A	A	A	A	A	A
2.	A	A	A	A	A	A	A	A	A	A	A	A	A
3.	A	A	A	A	A	A	A	A	A	A	A	A	A
4.	A	A	A	A	A	A	A	A	A	A	A	A	A
5.	A	A	A	A	A	A	A	A	A	A	A	A	A
6.	A	A	A	A	A	A	A	A	A	A	A	A	A
7.	A	A	A	A	A	A	A	A	A	A	A	A	A
8.	A	A	A	A	A	A	A	A	A	A	A	A	A
9.	A	A	A	A	A	A	A	A	A	A	A	A	A
10.	A	A	A	A	A	A	A	A	A	A	A	A	A

Main	Data Detail	General Characteristic	Quality Detail	Advanced Detail	Histogram	Report
ISO15415 Grade: A (4.0) 4.0/05/660						
ISO15415 Quality Parameters						
1	Unused Error Correction (UEC)	100%	A	PASS		
2	Symbol Contrast (SC)	77%	A	R1/Rd (77/0)	PASS	
3a	Modulation (MOD)		A	PASS		
3b	Reflectance Margin (RM)		A	PASS		
4	Axial Nonuniformity (ANU)	0%	A	PASS		
5	Grid Nonuniformity (GNU)	2%	A	PASS		
6	Fixed Pattern Damage (FPD)	4.0	A	PASS		
7	Left 'L' Side (LLS)		A	PASS		
8	Bottom 'L' Side (BLS)		A	PASS		
9	Left Quiet Zone (LQZ)		A	PASS		
10	Bottom Quiet Zone (BQZ)		A	PASS		
11	Top Quiet Zone (TQZ)		A	PASS		
12	Right Quiet Zone (RQZ)		A	PASS		
13	Top Transition Ratio (TTR)	0%	A	PASS		
14	Right Transition Ratio (RTR)	0%	A	PASS		
15	Top Clock Track (TCT)		A	PASS		
16	Right Clock Track (RCT)		A	PASS		
17	Average Grade (AG)	4.0	A	PASS		
18	DECODE		A	PASS		

ADVANCED DETAIL

Main	Data Detail	General Characteristic	Quality Detail	Advanced Detail	SRP	Report
Element Sizes						
	BAR	SPACE	BAR	SPACE	BAR	SPACE
LGB	15	11	15			
0	37	28	12	15		
1	25	27	25	14		
2	25	14	25	27		
3	11	53	12	14		
4	11	15	37	28		
5	12	28	37	15		
CGB	12	14	12	14	12	
6	14	12	15	50		
7	14	38	14	25		
8	14	25	14	38		
9	41	12	15	24		
5	15	24	40	12		
0	40	24	15	11		
RGB	14	11	15			
Element Deviations						
	BAR	SPACE	BAR	SPACE	BAR	SPACE
LGB	1.7	-1.6	1.6			
0	-1.8	1.7	-1.3	1.7		
1	-1.7	1.8	-1.9	1.9		
2	-2.0	2.0	-1.8	1.8		
3	-1.5	1.4	-1.2	1.4		

Click on the "Advanced Detail" tab.

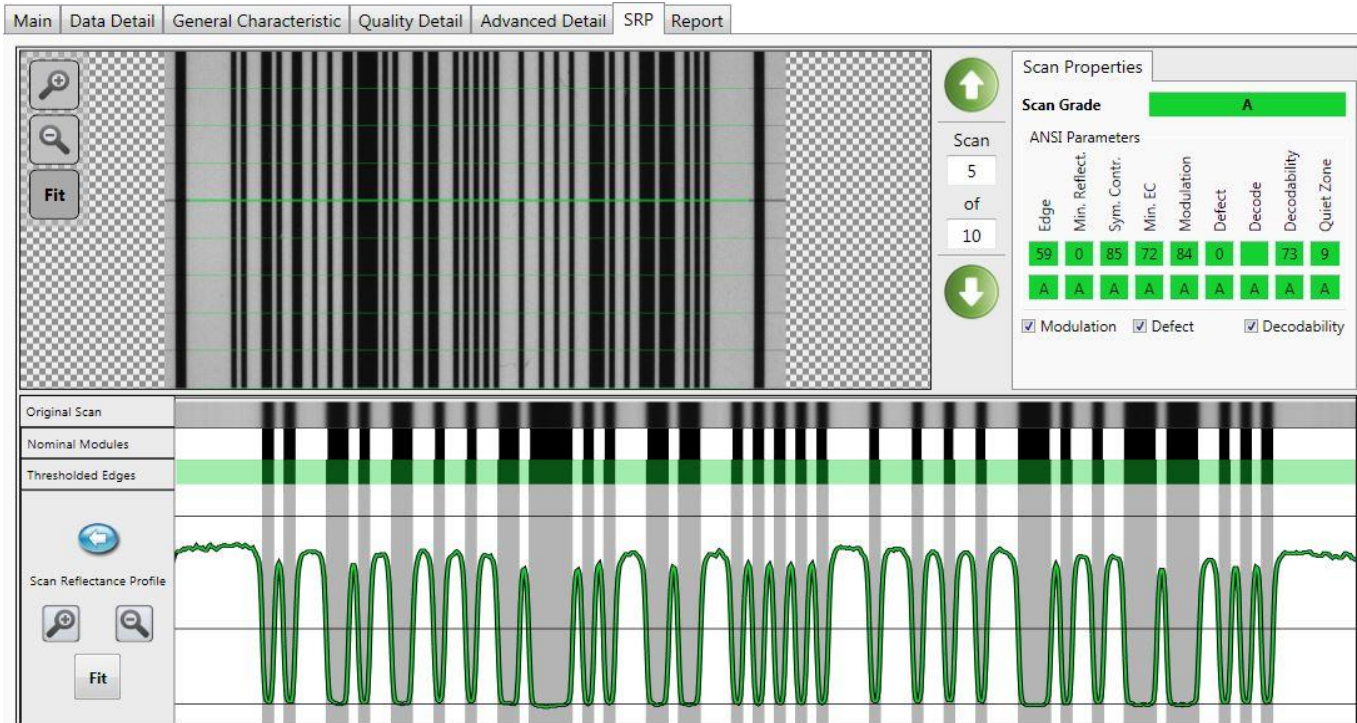
The "Advanced Detail" tab shows in-depth information and the particular info shown is dependent upon the type of barcode. In this case, we see the element widths of the UPC symbol in the first example. At the top are the individual bar and space sizes. The table on the left shows the element width deviation from ideal size. The below example shows the modulation values from a Data Matrix symbol.

Detailed explanation on modulation calculation can be found in the [11. Explanation of Grading Standards and their Parameters](#) under the ISO 15415 and AIM-DPM grading explanations.

Main	Data Detail	General Characteristic	Quality Detail	Advanced Detail	Histogram	Report											
-1	0	1	2	3	4	5	6	7	8	9	10	11	12	13	14	15	16
-1	92	94	96	96	97	98	96	98	97	94	97	100	97	97	97	99	98
0	93	93	79	93	88	94	69	93	77	96	81	97	74	96	93	96	97
1	93	86	88	77	96	97	94	96	82	94	79	94	97	89	88	79	97
2	94	88	86	94	97	70	94	96	78	94	82	84	94	93	87	94	97
3	94	78	93	93	75	96	96	75	94	97	94	92	84	96	98	97	98
4	96	93	93	92	93	78	86	93	89	93	87	89	96	96	98	97	97
5	96	75	91	74	93	79	93	81	97	91	93	89	96	97	89	91	83
6	98	76	96	94	94	77	93	93	91	92	87	93	94	89	93	93	96
7	97	93	93	94	96	74	93	84	94	96	89	88	93	93	91	92	87
8	97	93	92	92	84	94	77	93	96	87	93	94	86	89	94	97	96
9	96	79	93	94	82	89	94	94	75	93	87	93	87	93	94	88	86
10	97	93	92	94	84	89	77	94	86	88	93	94	94	89	88	87	96
11	96	94	93	96	94	79	92	77	86	88	89	88	91	89	96	92	81
12	96	79	94	97	96	81	92	93	79	94	93	94	93	79	94	96	87
13	94	93	92	79	86	89	91	86	81	92	86	88	96	94	93	94	91
14	94	93	86	92	93	86	92	84	87	93	92	94	97	97	79	94	98
15	93	96	89	82	88	89	88	87	86	91	86	82	87	93	93	97	
16	96	94	94	94	97	94	94	96	97	94	96	96	97	97	97	98	98

SCAN REFLECTANCE PROFILE (SRP)

Click on the "SRP" tab. This tab will be present with verifying 1D and stacked barcodes.



The SRP is what the grade of a 1D barcode is derived from. In this tab, you can examine every scan's SRP. The round green arrow up and down buttons will move you through the scan. The nine graded results for each scan are listed under "Scan Properties", as well as the overall scan grade. The image of the barcode may be magnified to examine sections of the code, much like a microscope would do.

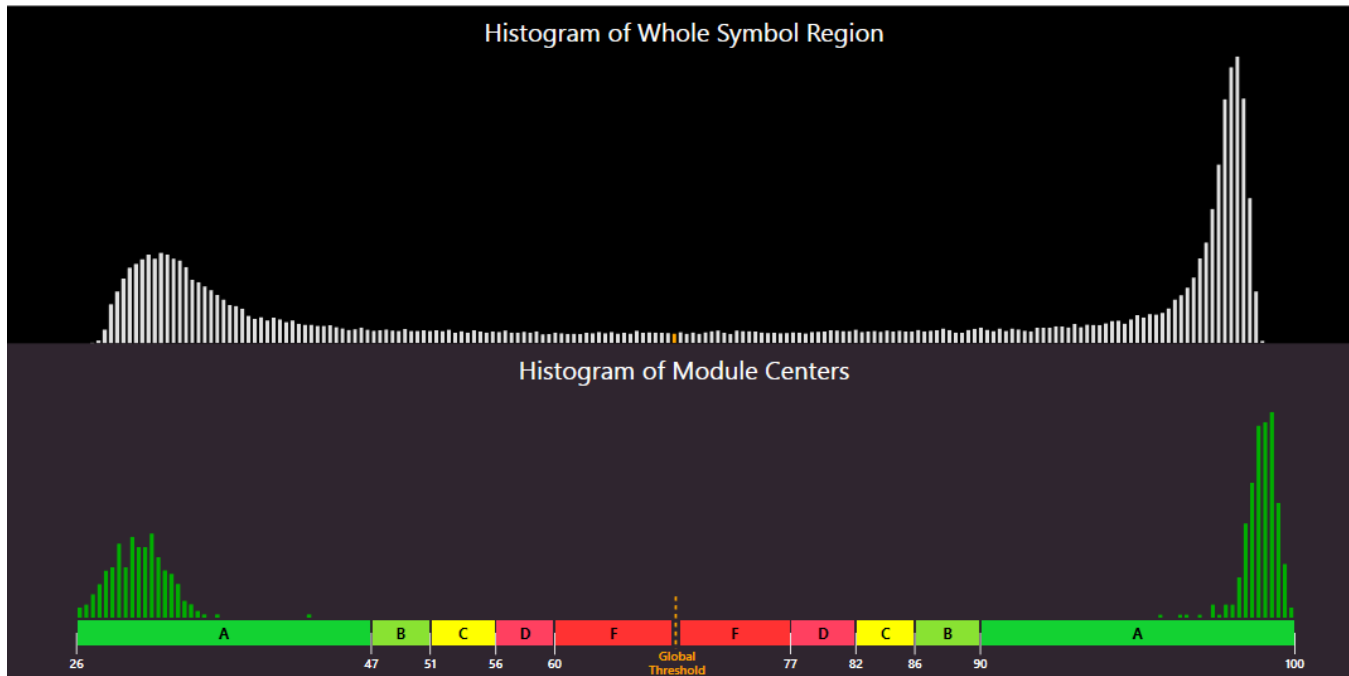
The "Original Scan" section is representative of the test aperture size as seen by the camera or laser. The "Nominal Modules" are representative of a perfectly printed code. The "Thresholded Edges" section shows the elements as detected by the verification algorithm. You can see printing discrepancy when these widths do not agree with the Nominal Modules. If you hover over the thresholded elements with your cursor, a tooltip will display the edges and modulation defect and decodability grades (for most symbologies). Edge shifts that result in the lowest decodability for the element are highlighted when you hover over the element.

The scan reflectance profile graph represents the light and dark thresholds with a global threshold. The graph is color-coded to indicate the grade throughout the code. This section can be magnified as well by using the magnification buttons or by drawing a box around the area you wish to see closer. The zoom feature will allow you to see defects or other discrepancies that may be present.

NOTE: The ability to see the entire image is only available when using a camera verifier. When using a laser verifier, users will only see one scan section at a time.

HISTOGRAM TAB

Click on the "Histogram" tab. This tab will be present when verifying 2D matrix symbols.



The "Histogram" tab will show analysis of each cell's reflective and associated grade.

The horizontal axis on the histogram represents the brightness level, with the dark elements on the left and the bright elements on the right. The brighter the element is, the further to the right it will be. The height of each bar represents the number of elements with the brightness associated with its position on the horizontal axis.

The top graph is a histogram representing the brightness of all the pixels in the image. The bottom graph only represents the center of modules in the symbol. As expected, the bottom graph does not contain elements which are not either definitively dark or definitively bright. While all the dark or bright modules are not exactly the same in brightness, they are relatively close to each other and that is why the bars are grouped together. In the upper histogram, some pixels, which are in between dark and bright, are represented. These pixels are typically on the border between dark and light modules and thereby obtain a middle value of brightness.

The horizontal axis contains markers showing the global threshold (tall line) and the separation between B and C, and between C and D modulation levels for both dark and light elements. Note that when grading according to ISO/IEC TR29158 (AIM DPM) the histogram will be labeled slightly differently. The 0% and 100% labels on the horizontal axis will be located at the means of the dark and light lobes of the histogram and there will be no "C" level because the DPM grading method uses only A, B, D and F levels for Cell Modulation.

REPORT

Click on the "Report" tab.

WebScan TruCheck™ USB Verification Report
Wed 28-May-2014 12:10:17 PM
Software Version: 3.03.13
Page 1 of 1

Report Summary

Data	012345678950
Symbology	UPCA

Verification Grades

Standard	Grade	Aperture	Wavelength	Formal Grade
ANSI/ISO	A (4.0)	06	660	4.0/06/660

Image

ANSI/ISO Parameter Avg Values

Parameter	Value	Grade	Status
1. EDGE	59	A	PASS
2. Reflectance Light / Reflectance Dark (Rl/Rd)	85/0	A	PASS
3. Symbol Contrast (SC)	85%	A	PASS
4. Minimum Edge Contrast (MinEC)	71%	A	PASS
5. Modulation (MOD)	83%	A	PASS
6. Defect (Def)	1%	A	PASS

A preview of the report is shown. The contents of the report can be customized to include more or less detail. Customization can be done in both the 1D and 2D settings menus, as well as setting options for electronically saving reports and how they are named. This report can be printed and/or saved electronically.

NOTE: Adobe PDF™ Reader is required in order to view the report in the "Report" tab.

6. BECOMING FAMILIAR WITH A LASER BASED VERIFIER

Before we begin, you may need to calibrate your verifier. For more information on calibration, please refer to section 9. *Calibration*.

A laser-based verifier will be used to verify linear one dimensional and stacked barcodes. Stacked barcodes include GS1 data bar (formally RSS) and PDF-417 symbologies.

Place the verifier over the symbol so that the symbol to be verified is centered and level in the opening of the guide plate.

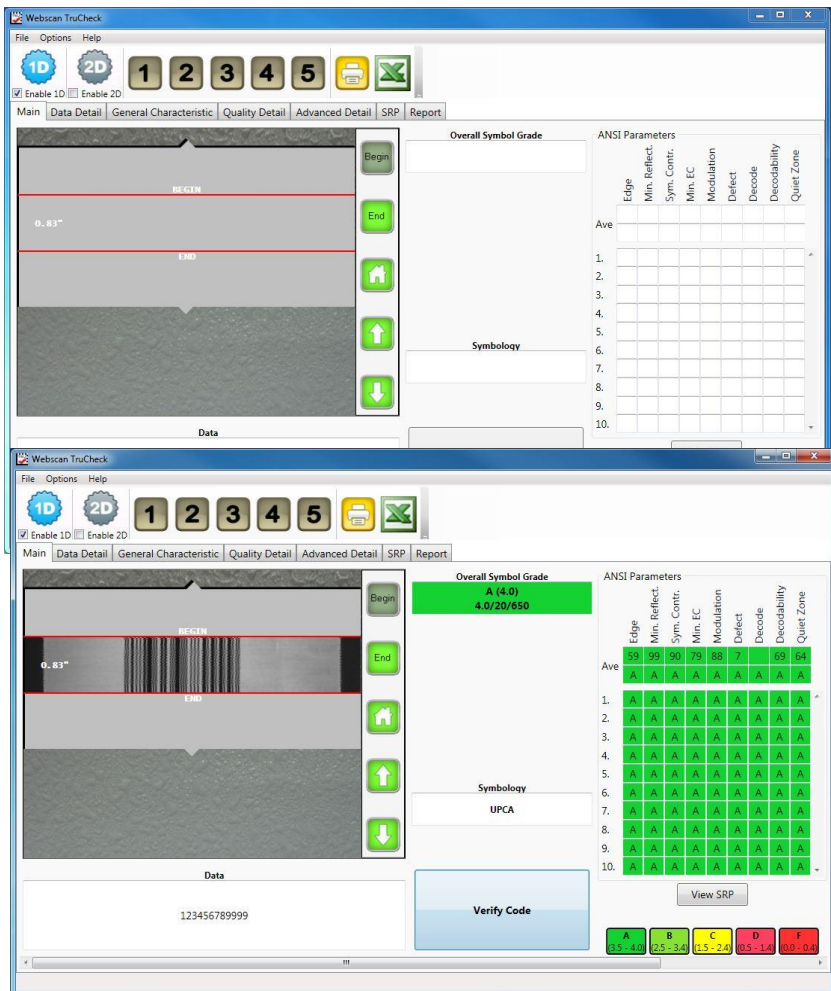
NOTE: It is very important that the barcode is centered in the guide plate opening. The pointed indicators in the guide plate serve as a guide for locating the symbol in the center.

The laser-based verifier automatically moves the laser from its "Start" position to its "End" position when you verify a symbol.

The start and end positions are indicated on the screen by the two red lines. The distance between the red lines is also shown on the screen. By pressing the "Start" button on your verifier, you will see the laser beam. Place the laser beam on the top of the barcode. Next, refer to your screen.

You can adjust the "Start" and "End" positions by clicking and dragging them with your mouse. You can also use the green buttons that are located to the right of the main image. To use these buttons, click on the buttons "Begin" or "End" and then use the "Up" and "Down" arrows to move the red lines. The laser moves according to your commands and you can adjust the "Begin" and "End" positions to cover the size of the barcode that you intend to verify.

When you press "Verify Code", the laser will move through the barcode and an image will be displayed on the main screen that shows the reflected light detected by the laser verifier. This image may be more "jagged" than an image from a digital camera, but this is normal for a laser scanner and will not affect the accuracy of your verification results.



After successful verification, you should see a similar screen. The main screen features a static image of the symbol verified. The center portion contains the overall grade and barcode type. The quality parameters are listed to the right. Below the main screen is a box showing the encoded data. Depending on the symbology and grading standard, more or different detail will be displayed.

The tool bar buttons and tabs are useful for in-depth analysis of barcodes and will be explained later in the [5. Examining Results](#) section.

NOTE:

- When adjusting the laser sweep or start/end position, linear 1D barcodes should start inside and end inside the barcode. Stacked symbols: the laser sweep should start outside the top and end outside the bottom of the barcode (or use Linear Auto Detect, see below).
- If the region starts above or below a 1D barcode, the verifier will attempt to scan that region, resulting in un-decoded scans. In the 1D settings menu, you may optionally select linear auto detect and the selected region can extend beyond the code without affecting the grade.
- On the top of the user interface you will see numeric buttons ranging from 1 to 5. These buttons can be used to save commonly used laser sweep settings. To save a setting, simply hold the ctrl button and click one of the buttons. Now that sweep setting can be recalled.
- The laser will go to sleep after 4 minutes. You may notice that the "Verify Code" button now says "Resume" when the laser is asleep. You can wake your laser up by pressing the start button on the laser or clicking the "Resume" button on your screen.

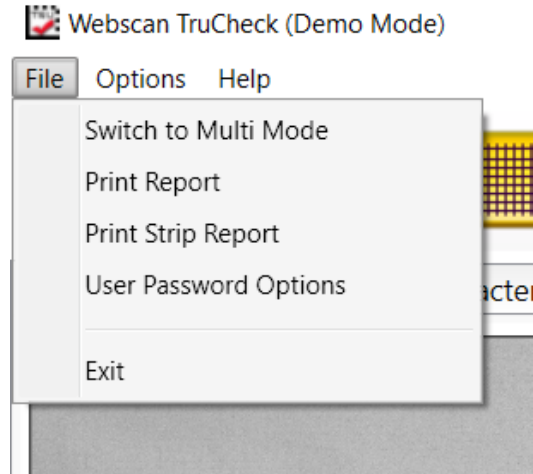
6.1 RESULTS FROM VERIFICATION WITH LASER BASED VERIFIER

After verifying with a laser-based verifier, the results are presented in the same tabs and shown above for 1D symbols with an imager-based verifier.

7.1 THE FILE, OPTIONS, AND HELP MENUS

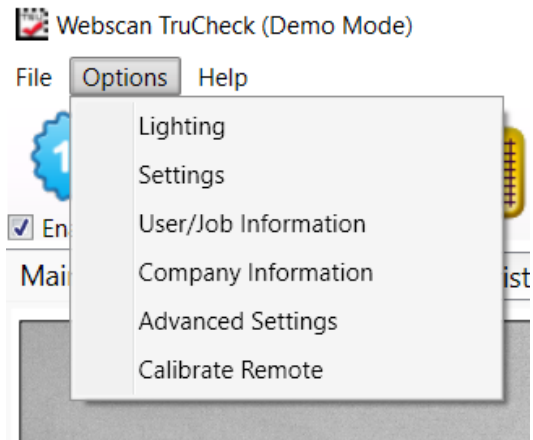
FILE MENU

- **Switch to Multi Mode**– Restarts the User Interface in Multi-Mode, a feature that facilitates simultaneous verification of many barcodes within the same image. (Note: when in Multi-Mode, this menu choice is replaced with "Switch to Single-Mode". See chapter *12. Using Multi-Mode* for more information about Multi-Mode.
- **Print Report** – Allows the operator to select any printer in the Windows Printer Folder for printed reports.
- **Print Strip Report** – Prints a report formatted to 40 columns to be printed to an attached thermal or dot matrix printer.
- **User Password Options** – Allows the System Administrator to set Password Protection on the "Settings" and "Calibration" menus and "Lighting Option" toolbar buttons. In order to change the password, you need to enter the current password. The default password as shipped from Webscan is "user" (using lower case letters).
- **Exit** – Close the program.



OPTIONS

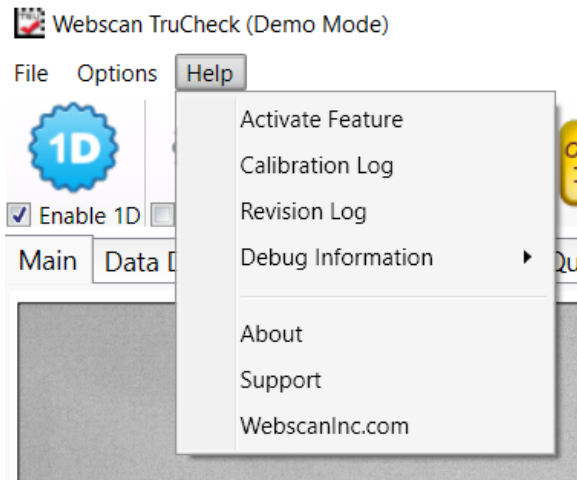
- **Lighting** – Allows users to select various lighting and cycling options. – It is not recommended to use cycling in a production environment because it is likely that one of the lighting options will produce a poor image that will not decode. It is recommended that users visually determine the appropriate lighting in the Live Image display while selecting different lighting options with the toolbar buttons and then verifying with the appropriate choice.
- **Settings** – Sets up the system for symbology, quality standards selection, and reporting options. This menu can also be accessed by clicking either the 1D or 2D Toolbar buttons.
- **User/Job Information** – Sets up several items that can be included in your reports, such as company name, product name, operator name, job number, batch number, and company logo. Note that the report will not print any field which is empty. If you want a space to fill in any personal information manually, you can type a "space" character (or any character) to cause the field to be included on the report.



- **Company Information** – Allows users to add their company name and logo to the PDF reports.
- **Advanced Settings** – These settings are password protected; these settings should only be accessed when instructed by a technical support representative.
- **Calibrate Remote** – This is the Calibration menu; detailed calibration instructions appear later in this manual.

HELP

- **Activate Feature** – This is a method for loading a license file that activates a special or optional feature of the software.
- **Calibration Log** – A complete log of date and time the verifier has been calibrated.
- **Revision Log** – A list of software feature additions and bug fixes, organized by software version. These can be selected and printed.
- **Debug Information** –



- **Save Now** - Used to save a file of problematic codes for evaluation by Webscan. Select this option after the scan and save the file to a known location. This file can be emailed to Webscan for evaluation.
 - **Save Before Verify** – Used to save a file of problematic codes for evaluation by Webscan in cases where the verification process causes the software to crash or otherwise prevents the saving debug information after the scan has taken place.
- **About** – Lists the current software revision.
- **Support** – Selects your default email client to send an email to support@webscaninc.com (using mailto:).
- **Update** – If the PC that the verifier is connected to has internet access, this option will initiate a check of more current software and download the software to the machine for installation. This feature is not supported in all versions or at all times, and therefore manually checking for updates is recommended.

Details for upgrading software are in section [1.4 Software Updates](#) of this manual. To find out what the most current version of software is, please visit www.webscaninc.com and review the FAQ section.

- **WebscanInc.com** – This will open a default browser and open webscaninc.com.

7.2 TOOLBAR BUTTONS

Illumination Icons



These icons only pertain to the TruCheck™ 2D USB-DPM imagers and the TruCheck™ DPM Tower. For more information, please refer to the [Using a TruCheck 2D USB DPM and TruCheck DPM Tower Verifier](#) section.

Diagnostic Icons:



The Magnifier Icon – The Magnifier enhances or enlarges the view of a decoded symbol. This is beneficial for examining problem areas of a symbol. After you verify a symbol, the default view is magnified. Clicking this icon will zoom out to the actual image size. If you click the image again, it will zoom back in.

NOTE: You can also draw a section in the zoomed in image for additional magnification. Right clicking with your mouse will return the view to the actual image size.



The Grid Icon – This either removes or overlays the barcode with a grid. In the case of 2D symbols, the grid displays the intersections and apertures, yellow or red indicators, representing warning or failing sections of the barcode. There are options on the grid to view the real grid, the ideal grid, have mod circles filled, or mod circles with no fill. The circles represent the test aperture size and if shown in green, they indicate an “A” or “B” graded area. Yellow circles indicate a “C” level graded area and red circles indicate a failing region.



The Original Icon – This restores the original view of the barcode.



The Black and White Icon – This will display the image as an imager might see the barcode. The black and white image is the result of thresholding the blurred image with the global threshold. The black and white image is what is actually used for decoding.



The Blurred Image Icon – The blurred image represents the result of processing the original image with the verification aperture. Small defects such as spots and voids may be “filled in” by this processing and edges will appear to be “softened”. This image is then used to calculate the global threshold, which is applied to the blurred image to get the black and white image.



The Excel Icon – Included with the TruCheck software is a feature where verification results can be captured into a Microsoft Excel™ Spread Sheet. Excel™ files can be saved on the local hard drive or any network path where the user has permission to write data to.

The Excel option can be initiated by clicking on the Excel Icon displayed on the interface or by selecting it from the “Options” menu -> “Save results to Excel”. The spreadsheet will open and can then be minimized to run in the background. All subsequent verifications will be posted to the sheet. The sheet should be saved as a different name (job, date, etc.) so that the template remains a blank sheet.



The Print Icon – This icon will print the results of the last barcode verified to the Default Windows Printer.

8. SELECTING LIGHTING OPTIONS FOR LABELS AND DPM APPLICATIONS

DPM (Direct Part Mark) verifiers have multiple lighting options to grade according to various grading methodologies and standards (such as AIM DPM).

Depending on the model that you have, the Lighting buttons on the toolbar will be available to quickly select the lighting option of your choice. The available lighting options may be affected by your application settings.



NOTE: Some lighting options are not allowed in some application standards so you should only select options that provide you with a result that is valid for your application. It is common to use AIM DPM as the basis for grading when working with DPM symbols and lighting other than 45-degree light from four sides.



If you have a TruCheck FlexHite Dome, you will also see this icon to enable the Dome Light.

Illumination Icons



45Q Icon – This icon selects 45-degree illumination. 45-degree four-sided illumination is used primarily for labels. This is the illumination needed for linear 1D and 2D barcode verification. This illumination is either not reported or is reported as 45Q. (If illumination is not reported, it is assumed to be 45Q)

The following are also available on DPM Verifier models.



30Q Icon – This icon selects 30-degree illumination from four sides. It may reduce glare from some substrates, which cause poor Symbol Contrast or Modulation grading. This illumination is reported as 30Q and is used primarily for DPM applications.



30T Icons – These icons select 30-degree two-sided illumination. This illumination can be from either the North/South or East/West. . These are useful on cylindrical surfaces and should be selected parallel to the axis of the cylinder. This illumination is reported as 30T.



90 Icon – This icon selects 90-degree diffuse illumination and works well on very shiny substrates and Dot Peen Applications. It is reported as 90.

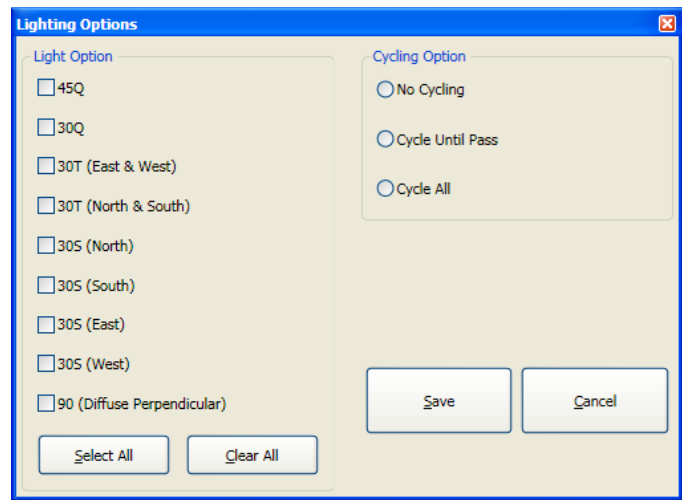


Dome Icon – this icon selects the Dome light which provided diffuse illumination from virtually all angles, to enable uniform illumination over curved surfaces, especially metal and other shiny materials.

The Illumination Icons are quick shortcuts to select the most common lighting choices. The Lighting menu, under Options, shown here, provides a way to select even more options (if available on your verifier model) and to choose a sequence of multiple lighting options to be used automatically when verifying.

Select each of the lighting options that you would like to use during verification, and then select your cycling option. When verifying, the system will proceed to verify, repeatedly using each selected light (Cycle All) or until one of the lighting options results in a passing grade.

Note that cycling may introduce very long delays and is not recommended for production use.



9. CALIBRATION

Your TruCheck™ verifier is a precision optical electronic instrument. Periodic calibration is necessary to account for changes in the environment. Ambient light and temperature are typical environmental conditions that frequently change. Electrical components also drift (change characteristics) over time and this can affect the accuracy of measurements made by the TruCheck™ verifier. Webscan recommends that you calibrate on a monthly basis; this is set as the default calibration reminder.

Please locate your calibration card for the next steps in this process. Calibration cards do not come standard with verifiers. In most cases, your sales representative should have explained the different card options and one should be included in your packaging.

NOTE: Calibration cards have an expiration date listed on the card. It is very important to only calibrate your unit with a valid card. When working with a verifier that can handle 2D codes, you can calibrate with either a 1D or a 2D calibration card.

If you would like to order a calibration card for your unit, please contact support@webscaninc.com or call 855-426-4639.

Part Number	Description	Verifier models
4899	3MIL Calibration and Conformance Symbol (UPC/EAN)	3mil lasers
6288	6MIL Calibration and Conformance Symbol (UPC/EAN)	6mil Lasers
4744	GS1 Data Matrix Calibration and Conformance Symbol	All Camera Based verifiers
5136	Webscan Calibration Symbol	All Cameras and 6mil lasers

9.1 HOW TO CALIBRATE YOUR LASER VERIFIER

1. When calibrating with GS1 standards, locate your copy of the "Calibrated Conformance Standard" sheet that was included with your calibration target. This sheet contains the Rmin and Rmax values you will log into the software prior to calibrating. If using the Webscan Calibration card, the Rmin/Rmax values are logged directly on the card.

2. Click "Go Live" and position the calibration symbol under the guide plate as shown in the image below. Set the laser sweep so that the laser is within the code beginning to end.

3. Select Options → Calibrate Remote from the main menu.

4. Enter the Rmax and Rmin values in the respective textboxes. These values can be found by using the chart on page 1 of your "Calibration Conformance Standard-ANSI Print Quality Analysis" sheet. On the Webscan calibration card, these are logged below the UPC symbol.

5. You may log in a calibration interval reminder at this time if desired.

Calibrate

Please select the calibration card type and place the calibration card under the imager, as shown below

Note
Please make sure the UPC-A Master Grade symbol is centered under the remote, use the two symbol lines extending between numeric fields as a reference

UPC-A MASTER GRADE

Please enter the Rmin and Rmax values for the Master Grade symbol (UPC-A or DataMatrix)

RMin: 5

RMax: 86

Remind in: 0 days since last cal (Recommended: 30 days)

Last Calibrated on: Mon 21-Jul-2014 01:33:43 PM

6. Click on "Calibrate". The system is now being calibrated; this may take a few seconds.

NOTE: The report included with the calibration barcode gives all the values in tenths (i.e. 69 would be considered a 6.9). The TruCheck accepts whole numbers only so you must round this value to the nearest integer. For the previous example of 6.9, you would enter 7. Likewise, the value 824 represents 82.4 so you would enter 82. Once the Rmin and Rmax values are entered during the initial calibration, they will be stored in the system for future use.

7. At the end of the calibration process, the TruCheck™ USB calibration screen will show, "Successfully set Rmax and Rmin".

8. Check that the calibration settings are within range by verifying the calibrated symbol and confirming the results. Results are displayed in the "Quality Parameters" tab on the User Interface. Beside the SC (Symbol Contrast) grade, RL/RD (Reflectance Light element/ Reflectance Dark element) values are displayed and should be equivalent or within tolerance to the Rmax /Rmin values logged in at calibration. Tolerance is referenced in section [13.5 Engineering Specs.](#)

DPM NOTE: When checking conformance with a calibration card that is calibrated to ISO 15415 using 45-degree light from 4 sides, it is necessary to select the 45Q lighting option, and set the aperture at Auto 80% on your DPM verifier in order to get conforming results.

9.2 HOW TO CALIBRATE YOUR CAMERA VERIFIER

NOTE: When checking Rmax and Rmin, either through calibrating or testing with the calibration card, the Grading Standard in the Settings menu must be set to ISO 15415 (not ISO 29158 or any other option). This is important because the expected values documented for the cards are derived using ISO 15415.

1. Locate the Rmin/Rmax values logged on your calibration card. If using a linear one-dimensional calibration symbol on a GS1 calibration and conformance symbol, locate the “*Calibrated Conformance Standard*” sheet that was included with your calibration target.

2. Click “Go Live” and position the calibration Master Symbol as close to the red target in the live image as possible.

3. Select Options → Calibrate Remote from the main menu.

4. Select the bullet appropriate to the type symbol your Calibration Symbol represents: Data Matrix or Linear.

5. Enter the Rmax and Rmin values in the respective textboxes. These values can be found by using the chart on page 1 of your “*Calibration Conformance Standard-ANSI Print Quality Analysis*” sheet GS1 Linear Calibrated Conformance symbols. On the GS1 Data Matrix Calibrated Conformance standard and on the Webscan calibration card, these are logged directly on the card.

6. You may log in a calibration interval reminder at this time if desired.

7. Click on “Calibrate”. The system is now being calibrated; this may take a few seconds.

The screenshot shows a window titled "Calibrate" with a close button in the top right corner. Inside the window, there is a red instruction box at the top: "Please select the calibration card type and place the calibration card under the imager, as shown below". Below this are two radio buttons. The left one is selected and is next to a square Data Matrix barcode. The right one is unselected and is next to a vertical barcode with the words "FAIL" and "PASS" written vertically. Below the radio buttons is another instruction box: "Please enter the Rmin and Rmax values for the Master Grade symbol (UPC-A or DataMatrix)". Underneath are two input fields: "RMin" with the value "5" and "RMax" with the value "85". To the right of these fields are two buttons: "Calibrate" and "Close". Below the input fields is a "Remind in" dropdown menu set to "0" and the text "days since last cal (Recommended: 30 days)". At the bottom of the window, it says "Last Calibrated on: Never".

NOTE: The report included with the calibration barcode gives all the values in tenths. i.e. 69 represents the number 6.9. The TruCheck™ accepts whole numbers only so you must round this value to the nearest integer. For the previous example of 6.9, you would enter 7. Likewise, the value 824 represents 82.4, so you would enter 82. Once the Rmin and Rmax values are entered during the initial calibration, they will be stored in the system for future use.

8. At the end of the calibration process, the TruCheck™ USB calibration screen will show, “Successfully set Rmax and Rmin and Pixels/Mil”.

9. Check that the calibration settings are within range by verifying the calibrated symbol and confirming the results. Results are displayed in the “*Quality Details*” tab on the User Interface. Beside the SC (Symbol Contrast) grade, RL/ RD (Reflectance Light element/ Reflectance Dark element) values are displayed and should be equivalent or within tolerance to the Rmax /Rmin values logged in at calibration. Tolerance is referenced in section [13.5 Engineering Specs](#).

10.1 1D SETTINGS

This is an example of the 1D settings screen. You can access this screen from the Options menu in the upper left hand corner of the interface.

Alternately, you can simply click the 1D button (depicted below) also located in the upper left hand corner of the interface.



10.1.1 TYPE OF CODE

Select the appropriate box for the type of symbol you are verifying. For best results, deselect all boxes for code types you are not verifying. Common 1D linear symbols are automatically selected.

Settings Specific to GS1 DataBar-

Name of the GS1DataBar/RSS Symbology

GS1 DataBar can report as the legacy name 'RSS' or the current designation 'GS1 DataBar'.

Guard Bar Requirements

The symbology specification changed in 2011, so your verifier will grade according to the new rule (2011) or legacy rule (2006).

Application Specification Acceptance Criteria-

Barcode Grading in accordance with ISO/IEC 15415 and/or ISO/IEC TR 29158 must be performed in accordance with an Application Standard which should specify Minimum and Maximum X-dimensions, Minimum Acceptable Grade, and in some cases the content and format of the data encoded in the symbol. The ISO grading standards specify the

methodology used to calculate a grade but the Application Standard is authoritative in specifying these particular parameters. In many typical applications, the minimum acceptable grade is "C" (1.5 or higher) and the Aperture can be automatically determined by selecting "Auto Aperture". However, you should be sure to consult your application standard and set these parameters accordingly.

GS1- Turns on the acceptance criteria defined by GS1, including minimum grade, detailed parsing of the GS1 data strings and minimum X Dimension/Magnification. When GS1 is activated by clicking its radio button, the selections are: *Always* – to always check, and *Auto* – to check only when a GS1 Symbology is decoded (but not fail a Code 128 symbol which does not contain a leading Function 1 character). When a non-GS1 symbology is decoded, the pass grade rule will be applied instead.

NOTE: you can select GS1 Format Check without selecting GS1 Application standard (select Pass Grade instead) if you want to check data format but no other rules, such as minimum Magnification or minimum pass grade. (UPC/EAN Symbols will be checked for Magnification and a warning will be issued when Magnification is less than 80% but more than 75%. A failure of GS1 Acceptance criteria will be issued when Magnification is less than 75%. If you do not want to be warned or receive a failure when violating these magnification minimums, you should set your Application to Pass Grade, not GS1).

Pass Grade- Establishes the minimum acceptable grade for the user's application. When activated, this displays a new field on the main screen that not only displays the grade, but turns red if the grade received is lower than the minimum set, and green if the grade is higher. This is useful for providing an at-a-glance acceptance or failure.

UDI/HIBC – This application standard checks symbols that meet UDI requirements using either GS1 or HIBC guidelines.

Format Check ISO/IEC 15434 – This application standard checks data for many industry standards which encode information using ISO/IEC 15434 data structures. Typical applications using this data structure include parcel shipping and other material handling applications using PDF417 or other high capacity barcode formats.

Laser Emulation – This is a special feature to make imager based verifiers perform in a similar way to Laser based verifiers.

The image shows a software interface for 'Decode Options'. It contains several controls: a dropdown for '# Scans' set to 10, a dropdown for 'Aperture' set to 6 mil, a text input for 'Wavelength' set to 660 nm, and a dropdown for 'Mode' set to Normal. There are also checkboxes for 'Linear Auto Detect', 'Ladder Orientation', and 'Mirror'. A separate box titled 'MSI-Plessey Decode Options' contains a dropdown for 'MSI-Plessey Mode' set to Mode 1 and a checkbox for 'Truncate Chk Dgt'.

Scans- Default value is 10 scans, but it is adjustable from 1 to 100. This is the number of scans that will be analyzed and graded.

Aperture- This is the synthetic aperture size the system will use to process the raw image into the reference (blurred) image. The aperture can be selected with the drop down box or manually entered by typing an aperture size in ten thousandths of an inch. For example, a 6-mil aperture is set either by selecting it from the drop down by typing 60.

NOTE: 6mil aperture is required for verifying many linear barcodes, such as GS1 –DataBar (RSS), so when Linear/RSS is selected, the aperture will default to 6 mil. The correct aperture size to choose is always governed by an application standard.

When auto-aperture is selected, rules are followed to select the most appropriate aperture in accordance with the most common industry standards. However, you may need to select a specific aperture to conform to the requirements for your application.

Rules for Auto Aperture for 1D barcodes:

Use the rules suggested in the Annex of ISO/IEC 15416 (from ANSI X3.182) namely:

If the X dimension is less than 0.18mm use 3 mil aperture

If the X dimension is between more than 0.18mm and less than 0.33mm use 5 mil aperture

If the X dimension is more than 0.33mm and less than .635mm use 10 mil aperture

If the X dimension is more than 0.635mm use 20 mil aperture

Note that these (above) rules will apply even if GS1 Always is selected, for Code 128 without a leading F1

For GS1-128 codes:

If the X dimension is less than 19.5 mil use 6 mil aperture

If the X dimension is 19.5 mil or larger, use 10 mil aperture

For HIBCC codes:

Use a 6 mil aperture

For UPC/EAN/GS1 DataBar codes:

If Magnification is less than 150%, use 6 mil aperture

If Magnification is 150% or more, use 10 mil aperture

For I25 codes:

Since there is no F1 or similar GS1 indicator, we use the GS1 Application (Auto or Always):

If the X dimension is less than 19 mil, use 6 mil aperture

If the X dimension is at least 19 mil and less than 25 mil, use 10 mil aperture

If the X dimension is 25 mil or more, use 20 mil aperture

You can (and should) override these rules by specifying a specific aperture directly for any application that requires a specified aperture. An application specification (such as GS1 Gen Spec, or MIL-STD 129 specifies an aperture value which may be different than what the above rules would yield).

Wavelength- This setting cannot be adjusted. This is the wavelength of the light used to verify the symbol.

I25/ITF14- Selects the Decodability calculation to be used when evaluating an Interleaved 25 symbol. Select GS1 ITF14 to use the algorithm specified by GS1 for ITF14 symbols. When Application Standard is set to GS1, this selection is fixed at GS1 ITF14. To evaluating per ANSI/ISO I25 standard you must select a different application standard, such as Pass Grade.

UPC Sup- Used to evaluate UPC Supplemental symbol extensions. Options include None (default), Auto, 2-digit, and 5-digit. Choose "Auto" to let the software detect when a supplement exists.

Mode- This option is used to verify barcodes that are either inverted (white on black) or pre-press (such as film). Options are *Normal, Pre-Press Negative, Pre-Press Positive, or Inverted Image*.

Linear Auto Detect- This option allows the user to create test areas larger than the code or no test area selection at all. The process will find the decodable area and divide the scans evenly throughout the code. Symbol height is reported in the event only a small area of a poorly printed code is decodable. This option can be deselected if the user wants precise diagnostics of poorly printed symbols. Note that if no Region is selected, Auto Linear Detect will be enabled even if it is not enabled in the settings menu.

Ladder Orientation- Option for verification of linear codes aligned in the field of view in a ladder orientation, where the code's bars are oriented left to right (in other words the scanning direction is vertical).

Mirror – Use this option to verify a mirror image of the captured image.

MSI Plessey Decode Options

Mode- Mode can be set to 1 or 2 and controls the check digit calculation so that it can match either of two ways of calculating the check digit in various MSI/Plessey applications. The mode selects which characters (even or odd) are weighted by 1 or 2 in the check digit calculation.

Truncate Check Digit- When selected, the last digit (which is a check digit) will not be shown as part of the decoded data. This is done to make the printed data appear to match the human readable information in applications in which the check digit is not shown in the human readable data.

Detail that will be included in Archived or Printed reports

ISO 15416/5 Grading Standard

– Option to grade verification according to ISO 15416:2016 or ISO 15416:2000 standards.

Grading Standard and Reporting Options				
<input checked="" type="checkbox"/> ISO 15416/5				
Grading Standard				
<input checked="" type="radio"/> 15416:2016 Compliant				
<input type="radio"/> 15416:2000 Compliant				
Per Scan Results		<input type="checkbox"/> Quality Parameters	<input type="checkbox"/> Element Widths	<input type="checkbox"/> Codewords
<input type="checkbox"/> 10 Scan Grid (Letter)		<input type="checkbox"/> Traditional Parameters	<input type="checkbox"/> ECC Details	<input type="checkbox"/> Encodation Analysis
<input type="checkbox"/> 10 Scan Grid (Value)		<input type="checkbox"/> Image of Symbol	<input type="checkbox"/> SRP	<input type="checkbox"/> Codeword Yield

ISO 15416:2016 – Grades parameters in accordance with the 2016 Revision of ISO/IEC 15416 which defines continuous grades rounded to the nearest tenth of a grade level for SC, MOD, DEF and DEC. Grades for each of these parameters for each scan are given as a numerical (i.e. 3.6) grade in accordance with the value received for that parameter. The result of this revision is reduced grading variability, and numerical grades that are potentially higher than the original grading definition. For example, a Symbol Contrast value of 64 will be assigned a grade of 3.6.

ISO 15416:2000 – Grades parameters in accordance with the original revision of ISO/IEC 15416 which assigns a whole number (or letter) grade level for values of a parameter measurement within the range defined for that grade. Grades for each parameter are given a letter (A, B, C, D, or F or number 4 through 0) such as a 3.0 (B) for any Symbol Contrast value between 55 and 70.

Per Scan Results- Includes a table of values for each of the individual scans.

Quality Parameters- The nine ANSI grades can be listed for each scan.

Traditional Parameters- Turns on the reporting of traditional parameter values on the PDF report. Traditional parameter will appear in the other reports and in the user interface regardless of this option when they apply.

Image of Symbol- Includes an image of the symbol on the report.

Element Widths- Prints the Bar Space width. Measured widths and deviations of the bar space combinations that make up each character encoded.

SRP- Prints a scan reflectance profile on the report.

Codewords- Reports on the codewords for PDF-417, MPDF, CC-A, CC-B, and CC-C symbols.

ECC Details- Report will include information about the error correction process.

Encodation Analysis- Turns on the reporting of Decoded characters or "codewords" to final output text which can be useful when encoding errors are present in a Code 128 or 2D symbology.

Codeword Yield- Turns on grading of Codeword Yield and Codeword Quality grading for multi-row stacked symbologies (such as PDF 417 and GS1 Composite components) in accordance with ISO/IEC 15415.

10.2 2D SETTINGS

This is an example of the 2D settings screen. You can access this screen from the options menu in the upper left hand corner of the interface.

Alternatively, you can simply click the 2D button (depicted below) also located in the upper left hand corner of the interface.



10.2.1 SYMBOLOGIES 2D

One or more symbologies can be selected, but it is recommended for speed that only the symbologies used in the desired application be selected.

Aperture Size- This is the diameter of the circular area used to “blur” the original image to arrive at the reflectance values in the blurred image used for decoding and verification in accordance with ISO/IEC 15415. This can be selected from the drop down list or numerically entered in accordance with an application specification.

'Auto Aperture' uses what would be appropriate for the application specification and/or code size.

'Auto 80%' uses a test aperture 80 percent of the size of the barcode's x-dimension. Note that the symbol might obtain an F for decode if it cannot be decoded when the aperture is set at 80%, even if it decoded in an earlier phase.

Aperture size has an effect on the grade. Bigger apertures will see bar width growth as being detrimental, smaller apertures may be negatively impacted by defects. Aperture size can be called out in the application specification, quality specification, or both.

The aperture setting is used when grading in accordance with ISO/IEC 15415, but it is not used when grading in accordance with AIM-DPM. AIM-DPM uses the X Dimension Range instead.

Auto Aperture rules for 2D Symbols:

Unless an application standard override (shown below the table) applies, the aperture size will be selected automatically depending upon the X-Dimension of the decoded 2D symbol (in accordance with the suggestion in ISO/IEC 15415) as follows:

X-Dimension	The aperture will be:
Less than 6 mil	02 (2 mil)
6 mil to 7.5 mil	03 (3 mil)
7.5 mil to 10 mil	05 (5 mil)
10 mil to 20 mil	08 (8 mil)
20 mil to 30 mil	16 (16 mil)
More than 30 mil	20 (20 mil)

Application Standard Overrides:

HIBCC: 6 mil

GS1:

For X Dimension less than 25 MIL, use 08 (8 mil) aperture (per GS1 Gen Spec Tables: 4, 7, 9 and 10)

For X Dimension more than 25 MIL, use 20 (20 mil) aperture (per GS1 Gen Spec Tables 8)

(For other special cases, such as Table 1 for AI 8200, do not use Auto Aperture.

Instead, use the appropriate fixed aperture setting.)

MIL-STD-130 (UID): 5 mil

Note that AIM DPM grading (ISO/IEC TR 29158) always selects an aperture automatically based on the X-Dimension of the decoded symbol, which will override these rules. So, these rules only apply to ISO/IEC 15415 grading, when Auto Aperture is selected.

10.2.2 APPLICATION STANDARDS FOR 2D BARCODES

Application standards configure the verifier to grade according to an individual entity's rules for what criteria is to be used to grade the codes and whether or not the encoded data meets the data formats for the application. 2D application standards currently implemented are the GS1 rules and the US DOD UID mandate.

GS1- Selection will auto select the correct test aperture if selected as 'Auto Aperture' and will require the data format to meet the rules as well as a quality grade of 'C' or better.

GS1-Auto- When the code has a Function 1 character encoded as the first character, the code will be graded according to what is spelled out in the 'GS1 General Specification'. Codes not encoded with the Function 1 character will not grade according to GS1 rules.

GS1-Always- Would require the code be GS1 formatted in order to get a passing grade. Codes not encoded with the Function 1 character will fail.

MIL-130-STD UID- This application standard will properly report the quality standard used to grade the code and data structure used when unique identifiers are created. The Military Standard spells out what standard grades are acceptable and users are reminded when a selection doesn't meet the revision level or where data is not properly formatted.

Pass Grade- Users may simply want to select a minimum passing grade based on a certain letter on numerical grade value. (A-F or 0.0-4.0)

UDI/HIBC – This application standard checks symbols that meet UDI requirements using either GS1 or HIBCC guidelines.

Format Check ISO/IEC 15434 – This application standard checks data for many industry standards which encode information using ISO/IEC 15434 data structures.

10.2.3 2D BARCODE DECODE OPTIONS

Dot Peen- Use this option for barcodes created with the dot peening process, which is a process where dots are peened onto a metal surface. Turn this on to use the AIM DPM "Stick algorithm" to connect dots. When specular lighting (90) is

selected, "dark" will be the color to connect by the stick algorithm, unless Invert Image is selected. When side lighting (30, 45, etc.), then light will be the color to connect by the stick algorithm, unless Invert Image is selected. These colors are the normal way that the embedded dots in a "dot peened" symbol will appear. However, if using the stick algorithm to connect dots produced by ink jet, it may be necessary to reverse the colors using Invert Image.

Invert Image- Will decode based on an image after inverting the colors of the image. The "Bar Width Growth" value will be reversed, for example, when this is selected. This also selects the color to be connected by the AIM DPM "Stick Algorithm" when Dot Peen is enabled.

Mirror – This will decode a mirrored image of the captured image.

X-Dimension Range- Utilized with the AIM-DPM quality standard to define the range of x-dimensions used to decode a symbol, also used as stick size range when utilizing the DOT PEEN option. This effectively overrides the Aperture setting, which is not used in AIM-DPM Grading. (AIM DPM Grading uses 50% and 80% aperture automatically).

Avg Angles- Are used when the now obsolete version of ISO-15415 is used to verify Data Matrix. Angles are created on the user interface to assist in the alignment of the code where the grade was based on an average of five different scans at different angles.

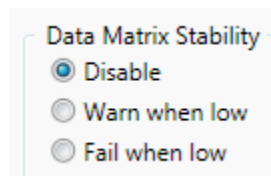
QR DECODE OPTIONS- The options below only pertain to QR Code.

ISO-18004 Compliant- Verifies QR code in strict adherence to the ISO-18004 specification

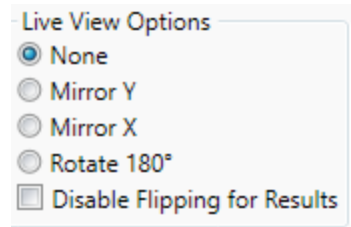
Adjust for Substrates- Uses a one module quiet zone to threshold the light space elements. This is beneficial for QR Codes printed on films or plastic where the internal spaces cannot achieve the reflectance levels of a four module quiet zone. This helps a printer determine print quality without modulation degradation due to substrate.

Mobile QR (Reduced QZ) – Only one module quiet zone is tested. Printers can check print quality ignoring artwork that interferes with the 4 module quiet zone specified in ISO-18004.

DATA MATRIX STABILITY- Override acceptance criteria to Warn or Fail when the grade is close to boundary conditions. This is a Webscan proprietary measurement, based on calculations that predict whether slight variations in the image could produce a large change in the "grid" of module centers which could potentially change the overall grade of a data matrix symbol.

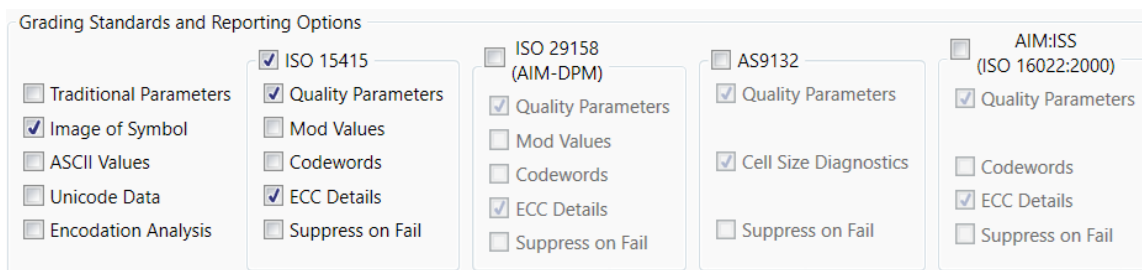


LIVE VIEW OPTIONS – These selections affect the Live Mode View but they do not alter the image that is verified. This is useful to adapt the live view to aid in positioning a symbol. For example it is often helpful to use "Mirror Y" for Omni units because the camera is facing the symbol from the bottom.



10.2.4 2D Grading Standards

These are the selections that determine what Quality Standards and optional sections will print on the reports.



Traditional Parameters- Includes Minimum Reflectance Difference (MRD) in the reported General Characteristics both in the verification report and on the user interface. MRD quantifies the minimum difference anywhere across the barcode. These worst-case black and white modules need not be adjacent to one another. Also, when GS1 application standard is selected and a EAN/UPC symbol is decoded, its "Magnification" will be checked. A warning will be issued for Magnification less than 80% but more than 75% and a Failure will be issued when Magnification is less than 75%. This will be noted in the grade section of the printed report.

Image of Symbol- Puts the image used for verification on the verification report.

ASCII Values- Turns on the reporting of the encoded ASCII values. Values are reported on the verification reports as well as in the "Data Detail" tab. This does not affect how unprintable characters are represented in the decoded data on reports, which is done by a special ASCII Code Representation, for example <CR> for carriage return which is ASCII value 13. See below.

Decoded Data ASCII Code Representation for unprintable characters- Some barcode symbologies (especially 2D symbologies, but also Code 128 and other 1D symbologies) can encode ASCII characters that are unprintable and therefore difficult to represent in the printed reports. A special pattern is used to represent these characters using a consistent notation of two letters, which represents the ASCII code, surrounded by brackets.

Reports will show unprintable ASCII values using the following notation.

ASCII Code Value (decimal)	ASCII Code name	Special Pattern Used
0	NULL	<NU>
1	SOH	<SH>
2	STX	<ST>
3	ETX	<ET>
4	EOT	<EO>
5	ENQ	<EN>
6	ACK	<AC>
7	BEL	<BE>
8	BS	<BS>
9	HT	<HT>
10	LF	<LF>
11	VT	<VT>
12	FF	<FF>
13	CR	<CR>
14	SO	<SO>
15	SI	<SI>
16	DLE	<DL>

17	DC1	<D1>
18	DC2	<D2>
19	DC3	<D3>
20	DC4	<D4>
21	NAK	<NK>
22	SYN	<SY>
23	ETB	<EB>
24	CAN	<CA>
25	EM	
26	SUB	<SU>
27	ESC	<ES>
28	FS	<FS>
29	GS	<GS>
30	RS	<RS>
31	US	<US>

NOTE: The special patterns always consist of two letters, even though the name of the ASCII code sometimes contains more than two characters (example EOT, BEL, etc.). This is to preserve regular column spacing in the printed reports and to make it easier to parse the data strings.

Unicode Data - Will include the data field interpreted using Unicode to show foreign language characters. Turn this on when your barcode contains such characters encoded using Unicode.

Encodation Analysis- Turns on the reporting of Decoded characters or "codewords" to final output text which can be useful when encoding errors are present in a Code 128 or 2D symbology.

ISO-15415- Reports and displays in accordance with the International Standards Organization Barcode Quality test specification for two-dimensional symbols. Selecting this standard allows for the selection of ISO 15415 reporting options: Quality Parameters, Mod Values, Codewords, and ECC Details, as listed below. These selections control whether these sections are printed in the report. These selections do not control the grading, only the amount of detail shown on the report.

AIM-DPM- Select this if you want to utilize the AIM-DPM verification standard. This can be selected with or without the Dot Peen selection. When using AIM-DPM Grading, the aperture setting is not used, and instead the X Dimension Range is used in accordance with the AIM-DPM methodology.

Selecting this standard allows for the selection of AIM DPM reporting options for the report: Quality Parameters, Mod Values, Codewords, and ECC Details, as listed below. These selections control whether these sections are printed in the report. These selections do not control the grading, only the amount of detail shown on the report.

NOTE: You can have both AIM-DPM and ISO 15415 turned on at the same time. However, it may be confusing to the operator, may take an extended period of time to decode, and create a lengthy report.

AS-9132- Reports and displays in accordance with the SAE AS9132 quality requirement standard for part marking Data Matrix code. This option is only selectable when Data Matrix is chosen in the Symbologies.

Cell Size Diagnostics- Enables reporting detailed clock track information showing heights and width for Data Matrix clock track elements.

AIM:ISO (ISO 16022:2000) – Reports and Displays in accordance with the ISO-16022 Symbology and Quality Specification for Data Matrix code. See Table 11.5 for information pertaining to this standard. This option is only selectable when Data Matrix is chosen in the Symbologies.

All other reporting options are organized by grading standard. The following reporting options have the same meaning regardless of which standard they appear under:

Quality Parameters – Enables reporting of a standard’s quality parameters and their corresponding values and grades. Selecting this is highly recommended, as this information makes visible the reasons for poor results in a standard.

Mod Values – Reports show the individual modulation values from each data cell in the symbol. Modulation values can be viewed on the User Interface “Advanced” tab regardless of this selection. (See section on Contrast Uniformity”)

Codewords – Turns on reporting of the codewords when verifying symbols. Values are reported on printed and saved reports as well as in the “Data Detail” tab.

ECC Details – Turns on reporting of error correction details, which appear within the “General Characteristics” tab.

Suppress on Fail – In verification, if the symbol fails (grades below the pass grade of) the standard, and it passes another selected standard, and then this standard’s results will not be included on the verification report. For example, if this option is set in the ISO 15415 standard options and both the ISO 15415 and AIM-DPM standards are enabled, and the ISO 15415 grade for the verification is below the pass grade while the AIM-DPM grade is at or above the pass grade, then the ISO 15415 standard results will not appear on the verification report.

10.3 REPORT AND PRINT OPTIONS 1D AND 2D

When “Save Report” is selected, the type of reports that will be saved are these selections. One or more must be selected when Save is on.

If a strip report is desired, the option for Thermal, Dot Matrix and Generic can be selected. The Thermal and Dot Matrix options support the Star character print set.

- Auto Print Report
- Auto Print Strip Report
- Metric Units
- Auto Print Summary
- Auto Prompt for Excel
- CSV Scan details

Auto Print Report— This option will trigger a report be printed to the 'Default Windows Printer' every time a code is verified.

Auto Print Strip Report— Same as above but the report is printed to a Windows installed strip printer.

Auto Print Summary— In Multi-Mode, where summary reports are created, they can be automatically printed for each verify.

Auto Prompt for Excel— If Excel functionality is required and no template is open, this will prompt the user to open a sheet.

CSV Scan Details— This option will populate the Excel sheet with all 10 scans or "# scans" from the "1D Setting Menu". The default is one line in the Excel sheet for each verify.

Define Report File Name Format			User Information		
<input checked="" type="checkbox"/> Save Report	Not Set	Browse	<input type="checkbox"/> Save Summary Report	Not Set	Browse
<input type="checkbox"/> Append PDF	Not Set	Browse	<input type="checkbox"/> Append Summary PDF	Not Set	Browse

Save Report— This option saves reports electronically to the path defined next to it. The path can be a local hard drive or file server the user has permission to write to. Several settings define what the reports contain and what formats to save.

Append PDF— This option is used if multiple reports are to be saved in one Adobe PDF file. Enter the file location and name, and as long as this option is selected, all reports will be appended.

Save Summary Report— In Multi-Mode, summary reports can be saved. If this option is not selected and 'Save Report' is selected, Multi-Mode individual reports will be saved, but not the summary.

Append Summary PDF—Same as Append PDF but for Multi-Mode Summary reports

Define Report File Name Format— Saved reports are named in a default format consisting of Symbology-Data- Date Stamp. Alternate naming conventions can be defined as seen below. Select the fields in order from "Available Fields" to "Selected Fields".

The dialog box titled "Define Report File Name Format" contains two main sections: "Available Fields" and "Selected Fields". The "Available Fields" list includes: Job Number, Company Name, Operator, Symbology, Data, Batch #, Product Name, and Time Stamp. Between the two lists are three buttons: "-->", "<--", and "Remove All". At the bottom of the dialog are "Save" and "Cancel" buttons.

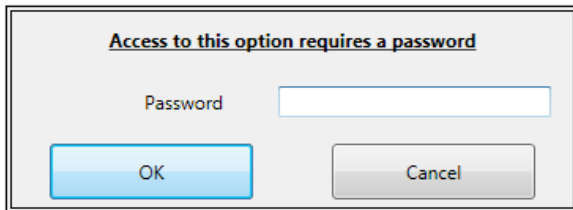
10.4 USER PASSWORDS

This option can be accessed from the "File" menu- follow the drop down and click on "User Password Options".

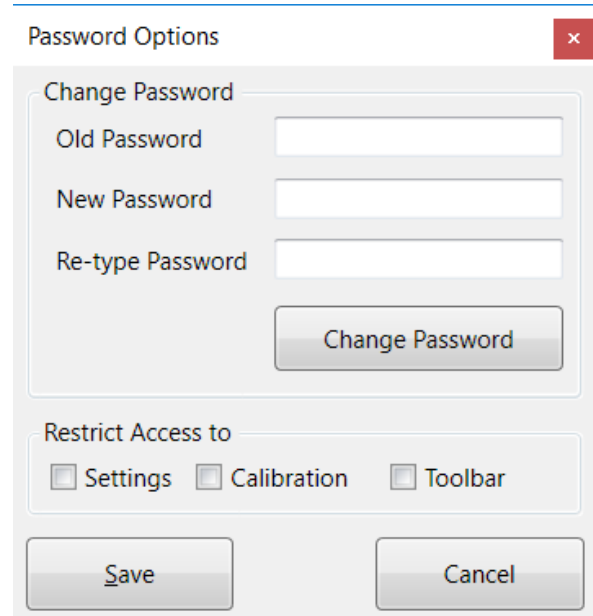
NOTE: The default password is "user", all lower case.

This menu provides the option to reset the password.

The password protection is provided for the settings menus, calibration menu, and toolbar options.



A dialog box titled "Access to this option requires a password". It features a text input field labeled "Password" and two buttons: "OK" and "Cancel".



A dialog box titled "Password Options" with a close button (X) in the top right corner. It is divided into two sections. The first section, "Change Password", contains three text input fields: "Old Password", "New Password", and "Re-type Password", followed by a "Change Password" button. The second section, "Restrict Access to", contains three checkboxes: "Settings", "Calibration", and "Toolbar". At the bottom are "Save" and "Cancel" buttons.

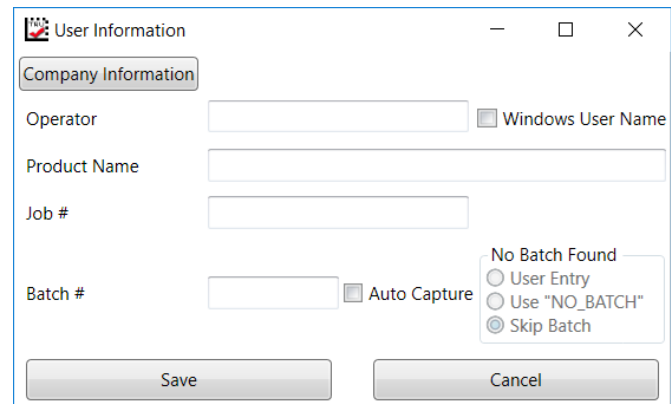
10.5 USER/JOB INFORMATION

"User/Job Information" can be found in the "Options" menu under "User/Job Information". This information is also in the "Settings" screen, under the "Report and Print Options" section.

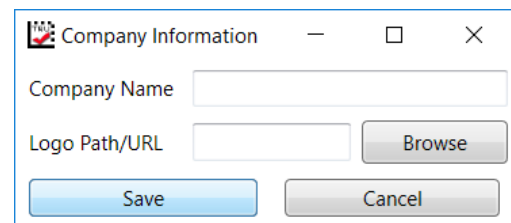
User/Job Information- Information required on reports can be selected here. Operator, Product Name, Batch #, and Job Number can be defined. If you check the "Windows User Name" box, the "Operator" field will be automatically filled in with the username of the user logged into Windows.

Within the User/Job Information menu is the Company Information menu. Company Name and Logo Path/URL can also be designated for inclusion on reports.

This dialog box can also be selected from the 'Options Menu -> User/Job Information'.



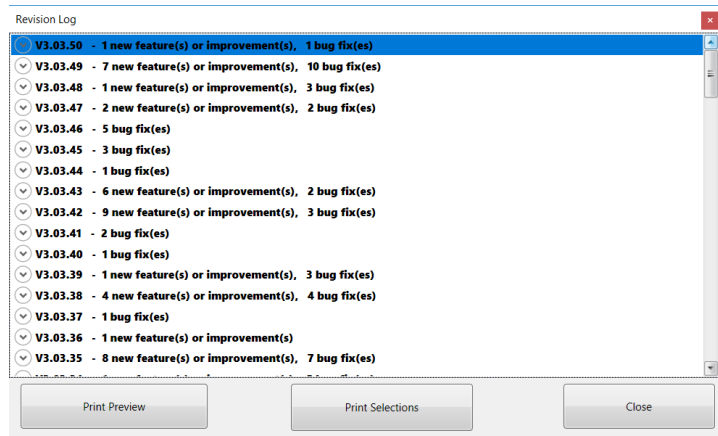
A dialog box titled "User Information" with standard window controls (minimize, maximize, close). It has a "Company Information" tab. The main area contains text input fields for "Operator", "Product Name", "Job #", and "Batch #". There are checkboxes for "Windows User Name" and "Auto Capture". A "No Batch Found" section contains three radio buttons: "User Entry", "Use 'NO_BATCH'", and "Skip Batch". "Save" and "Cancel" buttons are at the bottom.



A dialog box titled "Company Information" with standard window controls. It contains text input fields for "Company Name" and "Logo Path/URL", and a "Browse" button next to the "Logo Path/URL" field. "Save" and "Cancel" buttons are at the bottom.

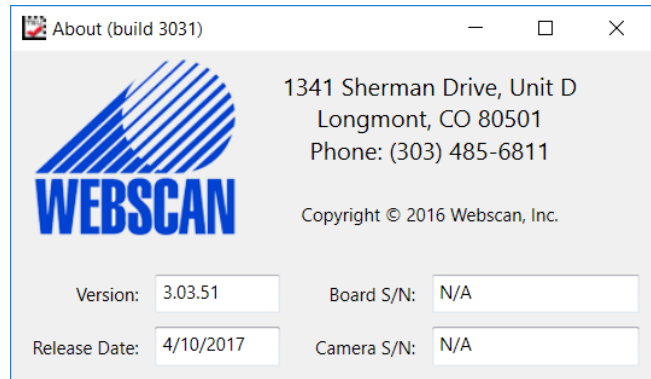
10.6 REVISION LOG

This feature can be accessed by going to the "Help" menu and following the drop down to "Revision Log". The Revision Log gives you a history of revisions to the software. This will allow you to document or review changes made in the latest software update.



10.7 ABOUT WINDOW

This feature can be accessed by going to the "Help" menu and following the drop down to "About." The About screen will show you your current version of software and its release date.



11.1 ISO/IEC 15416 (ANSI X3.182) PARAMETERS

The ANSI parameters section lists each of the nine ANSI parameters and gives a summary of the measurements based on all scans taken. Each parameter is completely explained below. Note that some of these parameters are average values over all of the scans, and the averages may skew or alter the apparent results. For a rigorous review of the ANSI process given on each of your codes, you should check the ANSI Matrix for each code, described in the next section.

This section may be very helpful in situations where the barcode cannot even be read. Therefore, the descriptions of each parameter below will explain what is measured in the case where a code is read and not read. When a code is not read, the scan is analyzed for apparent quiet zones, and the bars and spaces in between are used for the ANSI analysis.

1. EDGE: Edge Determination

Checks that each edge between bar and space can be detected and no false bars or spaces appear due to “splitting” of bars or ink splattered into spaces. If at least one scan results in a decoded barcode, the EDGE value is the number of bars and spaces, not including quiet zones, in the code. If no scans result in a decoded barcode then the EDGE value shown is the number of bars and spaces found between quiet zones (or apparent quiet zones) on the scan on which the most bars and spaces were found. The Scan Reflectance Profile graph can also be very helpful in analyzing a code that cannot be decoded.

2. RI/RD: Minimum Reflectance

Checks that the darkness of the bars is sufficient. Strictly speaking, the amount of light reflected by the bars (bar reflectance) must be less than half the light reflected by the spaces (space reflectance). The values shown are the light reflectance and the dark element reflectance separated by a slash. The light reflectance is the maximum reflectivity found in the scan (lightest or best space), and the dark reflectivity is the minimum reflectivity found in the scan (darkest or best bar). The requirement is for the minimum reflectivity to be no more than half the maximum reflectivity. If this requirement is met, the grade will be A, otherwise it will be F.

3. SC: Symbol Contrast

Measures the contrast between the brightest space and darkest bar. The result is assigned a letter grade of A, B, C, D, or F, with A being the highest contrast. The contrast is the difference between the maximum reflectivity (lightest or best space) and the minimum reflectivity (darkest or best bar). Note that Symbol Contrast is the *difference* between light and dark, and RI/Rd above checks the *ratio* of these values.

- A (4) > 70
- B (3) 55-70
- C (2) 40-55
- D (1) 20-40
- F < 20

Note that when grading according to ISO/IEC 15416:2016, the grade will be assigned a number to the closest tenth, between grade levels. For example, a Symbol Contrast value of 30 will be assigned a grade of 1.5. For values less than 20, the continuous grade progresses from 1 to 0 between 20 and 15. Continuous grading applies to SC, MOD, DEF and DEC only.

4. MinEC: Minimum Edge Contrast

Checks that the contrast between adjacent bars and spaces is high enough. When a barcode is scanned, a reading device must locate the edges between each bar and space. If the difference in the light and dark elements is not significant, this may not be achieved. Note that MinEC finds the worst-case contrast difference between each bar to space transition, whereas symbol contrast finds the best-case difference at any point across the barcode.

5. MOD: Modulation

Modulation checks the edge contrast as a fraction of the overall or best case contrast measured in symbol contrast. Modulation is an important measure of minimum edge contrast since most barcode reading devices employ “adaptive thresholding circuits” of some type that are sensitive to a symbol’s contrast in order to detect transitions between bars and spaces. If all bars and spaces were the same brightness, the minimum edge contrast would be equivalent to symbol contrast. In this case, modulation would be 100 percent. If some spaces are less bright than the brightest one, modulation will be some fraction of the overall contrast. Modulation therefore measures the amount of *available* contrast that is manifested in the worst-case bar to space transition. The percentage is assigned a letter grade. Excessive ink spread or bar growth can result in low modulation because very narrow spaces appear to be filled in by the encroaching bars in the Scan Reflectance Profile. If you have read down to here, you deserve a reward!

- A (4) ≥ 70
- B (3) ≥ 60
- C (2) ≥ 50
- D (1) ≥ 40
- F < 30

6. Def: Defects

The worst-case change in reflectance within a single bar or space is a defect. The largest difference in reflectivity found in a single bar or space is measured as a percentage of the symbol contrast and assigned a letter grade. Defects normally measure breakups or voids within bars, ink spots in spaces, or even the grain of a substrate in spaces. This very serious issue for scanners was not directly addressed by traditional verification techniques.

- A (4) ≤ 15
- B (3) ≤ 20
- C (2) ≤ 25
- D (1) ≤ 30
- F > 30

7. DCD: Decode

The widths of each bar and space are measured and used to interpret the data content of the barcode according to a specific mathematical formula appropriate for the barcode type. If the barcode cannot be decoded according to the formula, the accuracy of the bar and space widths are inadequate. The printout shows the number of scans decoded over the number of scans taken, e.g. 8/10 means 8 out of 10 scans decoded.

8. DEC: Decodability

Determines how accurate the bar and space widths are and how easily the widths can be determined. A perfectly accurate barcode will have 100 percent decodability, but decodability as low as 25 percent is often acceptable. Decodability is always measured in terms of the formula used to interpret the bar and space widths into the data content of the barcode. In order to read barcodes, thresholds between element widths are normally established according to

prescribed “decode algorithms”. Decodability is normally the percentage of the overall tolerance range for a bar or space width that is not used up by inaccuracies. See Appendix B for an example.

- A (4) >= 62
- B (3) >= 50
- C (2) >= 37
- D (1) >= 25
- F < 25

9. QZ: Quiet Zone

This refers to a dedicated amount of blank space on the left and right of the barcode. Each symbology specifies a minimum quiet zone. For example, UPC-A barcodes should have at least a nine module quiet zone on each side, whereas an EAN-13 barcode permits legal quiet zones to be as small as seven modules.

11.2 ISO/IEC 15415 GRADING PARAMETERS

1. **UEC (Unused Error Correction):** This is the percentage of error correction capability that is available for further incorrect modules. The assignment of grade is according to the following table:

UEC %	Grade
> 62	A
> 50 (but less than 62)	B
> 37 (but less than 50)	C
> 25 (but less than 37)	D
< 25	F

2. **SC (Symbol Contrast):** This is the difference in reflectivity between the brightest module and the darkest module. The assignment of grade is according to the following table:

SC %	Grade
> 70	A
> 55 (but less than 70)	B
> 40 (but less than 55)	C
> 20 (but less than 40)	D
< 20	F

3. **MOD and RM (Modulation):** This is a grade based on the amount of variability in reflectivity of the modules. A multi-step process is used to get the modulation grade. First the reflectivity of each module is compared to the global threshold and the overall symbol contrast according to the following formula:

$$\text{MOD} = 2 * (\text{abs}(R - \text{GT})) / \text{SC}$$

The Global Threshold GT is the midpoint between the reflectance of the brightest module and the reflectance of the darkest module. Next, the grade level for each module is determined from the MOD value according to the following table:

MOD %	Grade
> 50	A
> 40 (but less than 50)	B
> 30 (but less than 40)	C
> 20 (but less than 30)	D
< 20	F

Finally, the value of the grade for the MOD parameter will be the highest modulation level for which the modules meeting that level will result in an Unused Error Correction grade of that level or higher. The module with the lowest MOD is reported as Contrast Uniformity (CU) in General Characteristics to facilitate conformance testing to the requirements of ISO/IEC 15426-2.

4. **ANU (Axial Non-uniformity):** This is the amount of “out of square” a symbol is, or in other words, a measure of the overall aspect ratio of the symbol.

ANU %	Grade
≤ 6	A
< 8 (but more than 6)	B
< 10 (but more than 8)	C
< 12 (but more than 10)	D
> 12	F

5. **GNU (Grid Non-uniformity):** This is the worst-case distance between the calculated center of a module and the ideal location for the center of the module based on perfectly evenly spaced modules. The calculated center of the module is determined using clock tracks. The value is reported as a percentage of a module size.

GNU %	Grade
≤ 38	A
< 50 (but more than 38)	B
< 63 (but more than 50)	C
< 75 (but more than 63)	D
> 75	F

6. **FPD (Fixed Pattern Damage):** This is the overall grade for all the fixed pattern components. This grade is equal to the lowest grade of all the components listed below. The following is a list of components of the finder pattern.
7. **LLS (Left ‘L’ Side):** This is a grade based on imperfections in the left ‘L’ side of the finder pattern. There are two checks required to pass. The first requires gaps to be three modules or less and that gaps are separated by stretches of at least four correct modules. The second assigns a grade based on the overall percentage of correct modules according to the following table:

% of incorrect modules	Grade
0	A
< 9 (but more than 0)	B
< 13 (but more than 9)	C
< 17 (but more than 13)	D
> 17	F

The grade is the highest modulation level in which the first (gap test) passes and the correct module percentage results in a grade of that level or higher.

8. **BLS (Bottom 'L' Side):** This is a grade based on imperfections in the bottom 'L' side of the finder pattern (see Left 'L' Side).
9. **LQZ (Left Quiet Zone):** This is a grade based on imperfections in the quiet zone, which is a one-module area to the left of the left 'L' side. The grade is based on the percentage of modules, which are correct using the same grading table as for the 'L' sides.
10. **BQZ (Bottom Quiet Zone):** This is a grade based on imperfections in the quiet zone, which is a one-module area below the bottom 'L' side.
11. **TQZ (Top Quiet Zone):** This is a grade based on imperfections in the quiet zone, which is a one-module area above the top clock track.
 - a. **ULQZ (Upper Left Quiet Zone):** This is the top quiet zone above the upper left quadrant (Used only for 2 and 4 quadrant symbols, this is the grade based on the segment of the quiet zone above the top clock track of the left quadrant).
 - b. **URQZ (Upper Right Quiet Zone):** This is the top quiet zone above the upper right quadrant (Used only for 2 and 4 quadrant symbols, this is the grade based on the segment of the quiet zone above the top clock track of the right quadrant).
12. **RQZ (Right Quiet Zone):** This is a grade based on imperfections in the quiet zone, which is a one-module area to the right of the Right Clock Track.
 - a. **RUQZ (Right Quiet Zone to the right of the upper right quadrant):** Only for 2 and 4 quadrant symbols, this is the grade based on the segment of the quiet zone to the right of the upper right quadrant.
 - b. **RLQZ (Right Quiet Zone to the right of the lower right quadrant):** Only for 4 quadrant symbols, this is the grade based on the segment of the quiet zone to the right of the lower left quadrant.
13. **TTR (Top Transition Ratio):** This is a grade based on imperfections in the top clock track, with relation to its adjoining quiet zone. The ratio is the number of transitions from light to dark or dark to light in the quiet zone divided by the number of transitions in the clock track. Since the number of transitions in the quiet zone should be zero, the ideal value for this parameter is zero. However, a small number of transitions can be tolerated as long as the ratio remains relatively low. As the number of teeth in the clock track increases (larger symbols) more transitions in the quiet zone can be tolerated. Also, more transitions in the clock track (which are really imperfections) will tend to improve this measurement. The grading scheme for this transition ratio is:

Transition Ratio %	Grade
< 6	A
< 8 (but more than 6)	B
< 10 (but more than 8)	C
< 12 (but more than 10)	D
> 12	F

The value of the grade will be the highest modulation level for which the ratio gives a grade from the above table of that modulation level or higher.

- a. **ULQTTR (Transition ratio for Upper Left Quadrant Top Clock Track):** Only for 4 quadrant symbols, this is the grade based on the clock track segment at the top of the upper left quadrant. For a 2 quadrant symbol, this will be labeled LQTTR.
 - b. **URQTTR (Transition ratio for Upper Right Quadrant Top Clock Track):** Only for 4 quadrant symbols, this is the grade based on the clock track segment at the top of the upper right quadrant. For a 2 quadrant symbol this will be labeled RQTTR.
 - c. **LLQTTR (Transition ratio for Lower Left Quadrant Top Clock Track):** Only for 4 quadrant symbols, this is the grade based on the clock track segment at the top of the lower left quadrant.
 - d. **LRQTTR (Transition ratio for Lower Right Quadrant Top Clock Track):** Only for 2 and 4 quadrant symbols, this is the grade based on the clock track segment at the top of the lower right quadrant.
14. **RTR (Right Transition Ratio):** Transition ratio (see Top Transition Ratio) for the right clock track in relation to the right quiet zone.
- a. **ULQRTR (Transition ratio for Upper Left Quadrant Right Clock Track):** Only for 2 and 4 quadrant symbols, this is the grade based on the clock track segment to the right of the upper left quadrant. For a 2 quadrant symbol, this will be labeled LQRTR.
 - b. **URQRTR (Transition ratio for Upper Right Quadrant Right Clock Track):** Only for 2 and 4 quadrant symbols, this is the grade based on the clock track segment to the right of the upper right quadrant. For 2 quadrant symbols, this will be labeled RQRTR.
 - c. **LLQRTR (Transition ratio for Lower Left Quadrant Right Clock Track):** Only for 4 quadrant symbols, this is the grade based on the clock track segment to the right of the lower left quadrant.
 - d. **LRQRTR (Transition ratio for Lower Right Quadrant Right Clock Track):** Only for 4 quadrant symbols, this is the grade based on the clock track segment to the right of the lower right quadrant.
15. **TCT (Top Clock Track):** This is a grade based on imperfections in the top clock track. Some imperfections in the clock track can be tolerated. However, the rule that must be maintained for a passing grade is that three out of every five modules (on a consecutively rolling window of five modules) must be correct. The value of the grade will be the highest modulation level for which this test passes.
- a. **ULQTCT (Top Clock Track for Upper Left Quadrant):** Only for 2 and 4 quadrant symbols, this is the grade based on the clock track segment at the top of the upper left quadrant. For 2 quadrant symbols this will be labeled LQTCT.
 - b. **URQTCT (Top Clock Track for Upper Right Quadrant):** Only for 2 and 4 quadrant symbols, this is the grade based on the clock track segment at the top of the upper right quadrant. For 2 quadrant symbols this will be labeled RQTCT.

- c. **LLQTCT (Top Clock Track for Lower Left Quadrant):** Only for 4 quadrant symbols, this is the grade based on the clock track segment at the top of the lower left quadrant.
 - d. **LRQTCT (Top Clock Track for Lower Right Quadrant):** Only for 4 quadrant symbols, this is the grade based on the clock track segment at the top of the lower right quadrant.
16. **RCT (Right Clock Track):** This is a grade based on imperfection in the right clock track (see Top Clock Track).
- a. **ULQRCT (Right Clock Track for Upper Left Quadrant):** Only for 2 and 4 quadrant symbols, this is the grade based on the clock track segment to the right of the upper left quadrant. For 2 quadrant symbols, this will be labeled LQRCT.
 - b. **URQRCT (Right Clock Track for Upper Right Quadrant):** Only for 2 and 4 quadrant symbols, this is the grade based on the clock track segment to the right of the upper right quadrant. For 2 quadrant symbols, this will be labeled RQRCT.
 - c. **LLQRCT (Right Clock Track for Lower Left Quadrant):** Only for 4 quadrant symbols, this is the grade based on the clock track segment to the right of the lower left quadrant.
 - d. **LRQRCT (Right Clock Track for Lower Right Quadrant):** Only for 4 quadrant symbols, this is the grade based on the clock track segment to the right of the lower right quadrant.
17. **AG (Average Grade of Damage across many parts of the Finder Pattern):** This is a grade that considers the accumulated effect of damage to several parts of the finder pattern. Five values are averaged together. One of these is the lowest of all the grades associated with all the clock track segments, namely TCT, TTR, TQZ and RCT, RTR, RQZ. The other four are LLS, BLS, LQZ, and BQZ. The average must fall in the range of 0.0 through 4.0 and is given a grade according to the following:

Ave Grade	Grade
Equals 4.0	A
≥ 3.5 (but less than 4.0)	B
≥ 3.0 (but less than 3.5)	C
≥ 2.5 (but less than 3.0)	D
< 2.5	F

NOTE: The effect of the AG parameter is to lower the overall grade of symbols, which have several individual parameters at or near the same level. For instance, with enough B grades in individual parameters, the overall grade may come out as a C grade rather than a B.

18. **DECODE** – Report whether the 2D Symbol was decoded in accordance with the reference decode algorithm with the specified aperture. Note that when Auto Aperture or Auto 80% is selected for Aperture, it is possible for decoded results to be reported, but for a failure to occur when decoding using the selected aperture. In this case, the DECODE grade will be F and a message will be reported in the grade section of the report.

Contrast Uniformity (CU): This is the value of MOD (modulation) for the worst case module selected from a 2D Matrix symbol. This is useful for process control, as way of measuring the drift in reflectivity consistency, and more importantly for testing conformance to ISO/IEC 15426-2 which requires the modulation of a specific module within a conformance

test symbol to be reported. This parameter is not graded, nor listed in the Quality Detail tab. Rather, it is reported in General Characteristics.

11.3 AIM-DPM 2006 GRADING PARAMETERS

The AIM-DPM method of grading data matrix symbols modifies the process of ISO-15415 and is more appropriate for direct part marking applications. This standard was developed to be more representative of the scanning performance of modern readers that in some cases are specifically designed for these demanding applications.

In this method, the image brightness is adjusted to produce an image of the symbol that fills most or all of the dynamic range of the imager, resulting in an image that is easier to see. Additionally, the threshold between dark and light is calculated from the statistics of the image brightness histogram. Thus, the measurements calculated by AIM-DPM differ from those of ISO 15415 significantly.

Some of the parameters reported in ISO 15415 are changed so drastically that in order to remove the possibility of confusion between these two methods, the parameters have been renamed. These parameters are:

AIM-DPM Parameter Name	ISO 15415 Parameter Name	Summary of Change(s)
CC (Cell Contrast)	SC (Symbol Contrast)	Made relative to light background
CM (Cell Modulation)	MOD (Modulation)	Threshold calculated from statistics rather than the maximum and minimum reflectance. Grading scale range set to Mean of distribution, rather than maximum and minimum reflectance
DD (Distributed Damage)	AG (Average Grade)	Modulation overlay uses only A, B, and F levels instead of A, B, C, D, and F.
MR (Minimum Reflectance)	Not necessary since SC is measured on an absolute scale	An absolute limit on SC of 5% added to temper the relative nature of CC.

All of the Fixed Pattern Damage grading (other than AG shown above) are not renamed, but are functionally different since the global threshold and modulation grading scale are different. In general, symbols will obtain a significantly higher grade according to AIM-DPM than ISO 15415. Therefore, grading according to AIM-DPM is appropriate only when called for in an application specification.

Another significant difference is the allowance for a variety of illumination options. These include the four-sided 45° light that is the default for ISO 15415. Additional lighting angles allowed are: 30° lighting from four sides, 30° from two sides (which can be either North/South or East/West), and 90° diffuse on-axis lighting. The light source that is used is reported using a notation that includes the angle, and a letter (Q for 4, T for two).

AIM-DPM also varies the size of the aperture until the symbol is decoded, and then the grading is repeated with two different aperture sizes (50% and 80%) and the better of the two grades is reported as the final grade. Note that when the reference decode algorithm fails to decode a symbol with both 50% and 80% aperture, the DECODE grade will be

"F" and a note will be printed on the grade section of the report, even if the symbol is recognized and decoded with a different aperture size in an earlier phase of the grading procedure.

The parameters, which are new or significantly modified for AIM-DPM, are explained below:

1. **CC (Cell Contrast):** This is the relative contrast value between bars and spaces, taken from the means of the light and dark element $CC = (Lmean - Dmean) / Lmean$

CC %	Grade
≥ 30%	4
≥ 25%	3
≥ 20%	2
≥ 15%	1
< 15%	0

2. **CMOD (Cell Modulation):** Similar to MOD in ISO 15415, this parameter measures the deviation in the reflectivity of dark and light elements. A range for each group (light and dark) is created from the global threshold to the mean reflectance of the elements. Each module is graded along this range, then error correction capability is considered to "discount" the effect of one or a few elements with low values, and a final grade for this parameter is computed.
3. **DDG (Distributed Damage Grade):** Similar to AG in ISO 15415, this parameter takes into account the effect of multiple segments of the fixed pattern having imperfections. Where multiple segments have a low grade, the effect of this "distributed damage" is reflected in a lower grade for DDG than the lowest of the individual segments.
4. **MR (Minimum Reflectance):** This is a requirement for at least 5% reflectance difference between light and dark elements, as a restraint on the purely relative CC parameter.
5. **Decode:** Decode grade A or F depending upon whether the reference decode algorithm succeeds in decoding the symbol with the required final aperture size.

11.4 AS9132 PARAMETERS

1. **Distortion Angle (DA):** The angle between the left side and the bottom side of the 'L' finder pattern should be 90 degrees. The distortion angle is the deviation from 90 degrees exhibited by the 'L' in this symbol. A distortion angle of 7 degrees or less will Pass, while a larger distortion angle will Fail.
2. **Cell Fill (Size):** The size of the cells must be printed at least 60% of the cell spacing, and no more than 105% of the cell spacing.
3. **Ovality:** For dot peen symbols (where the cells are allowed to be round) the cells should be circular. As a measure of ovality, the ratio of the widest diameter to the smallest diameter is checked and must be less than 20% different in order to Pass.
4. **Center Offset:** The center of each cell must not be offset from its correct grid location by more than 20% of the cell spacing in order to Pass.

```
AS9132 Quality Parameters:
DA(Degrees): 0.44          Pass
Symbol Contrast:86
Total Modules:484
Total Modules failed:2
Total Modules failed:0.4
Size failed:0.4
```

5. **Symbol Contrast:** Symbol contrast should be at least 20% to Pass.

11.5 ISO 16022 DATA MATRIX PARAMETERS

AIM (ISO16022) Quality Parameters:		
1. DCD:	A	Pass
2. SC:	86% A	Pass
3. BWG:	20% A	Pass
4. ANU:	0% A	Pass
5. UEC:	100% A	Pass



ISO 16022 Parameters:
 Decode (DCD), Symbol Contrast (SC), Bar Width Growth (BWG), Axial Non-Uniformity (ANU), Unused Error Correction (UEC)

DCD: Indicates whether the symbol was decoded by the reference decode algorithm.

Symbol Contrast: Represents the difference between reflectance of light and dark elements.

BWG: Represents the bar width growth as defined in ISO 16022.

ANU: Represents Axial Non-Uniformity, which represents non-square aspect ratio of the modules in the symbol.

UEC: Represents Unused Error Correction, which indicates the amount of error correction used out of the budget for error correction available in the symbol.

11.6 TRADITIONAL (NON-GRADED) PARAMETERS

PCS, MRD, SC, MinEC and MOD – Ways of Quantifying Contrast: PCS, Print Contrast Signal, is an older and largely no longer used measure of contrast. Contrast is intended to quantify the difference between the bars and the spaces in reflectance. PCS is defined mathematically as:

$$PCS = (R_{max} - R_{min}) / R_{max}$$

In other words, the percentage of the light background accounted for by the difference between the bars and spaces. This measure was defined as a measure of perceived contrast by the human eye, long before and outside the context of measuring barcode contrast. Notice that the measurement is made relative to the brightness of the background. The fact that it is relative to the background means that the darker (worse) the background color is, the higher (supposedly better) the value of PCS. This may correspond with the way people view things, but not really, how scanners work. Rather, scanners are sensitive to the absolute difference between the reflectance of bars and spaces. Scanners are especially sensitive to variations in contrast within the same scan.

Another measurement, called MRD (minimum reflectance difference) quantifies the minimum difference anywhere across the barcode. MRD considers the brightest (worst) bar and the darkest (worst) space anywhere in the barcode. These worst case bar and space need not be adjacent to one another.

NOTE: ANSI grading system defines yet a different way of measuring contrast: SC (symbol contrast) and MinEC (Minimum Edge Contrast.) SC is the difference between the brightest (best) space and darkest (best) bar. Minimum Edge Contrast is the smallest difference occurring between adjacent bars and spaces (across a single edge). MOD (Modulation) is simply the ratio between MinEC and SC, in other words, the percentage of available contrast that is manifest in the worst-case edge.

Bar Width Growth: Bar Width Growth is a measure of ink spread. The measurement of bar width growth is different on each symbology, and requires at least one successful decode of the symbol for measurement. Generally, bar width

growth is taken on groups of bars and spaces, sometimes large groups. This results in stable results when bar width growth is uniform, but does not catch isolated cases of a single bar widening or shrinking. In fact, it is possible to have a very low (good) reading of bar width growth when in fact a large number of even all the bars and spaces are incorrectly grown or reduced, as these may tend to cancel each other out. Such bar width inaccuracies will normally be detected by low grades of Decodability.

12.1 INTRODUCTION

- The TruCheck™ Omni can be used in two modes: Single-Mode and Multi-Mode.
- Single-Mode will decode a single symbol at a time, and is useful for quick, simple verification of isolated symbols.

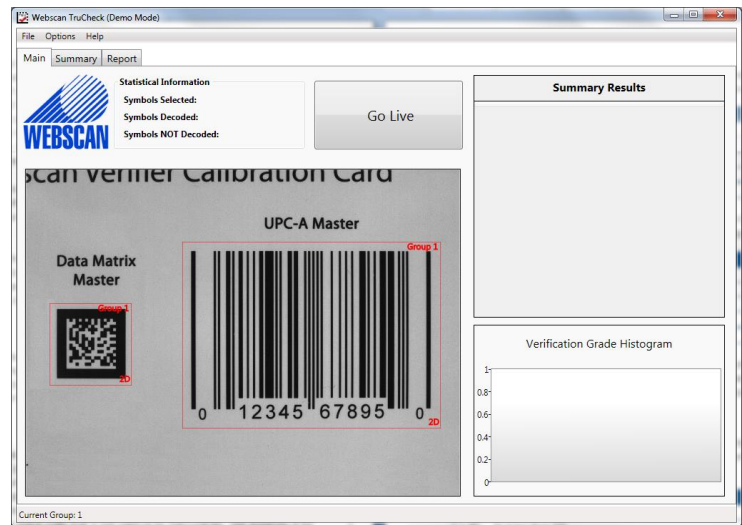
12.2 GETTING STARTED

- When the application is started for the first time, it will be in “Single-Mode”.

• To switch to “Multi-Mode”, select “File->Switch to Multi-Mode”. This will restart the software in “Multi-Mode”.

• In “Multi-Mode”, any number of symbols may be verified per verification cycle.

• Before any verification has taken place, the software will show an image that was taken during start up, and the camera will be in an inactive state. To proceed to verify symbols, press the large button near the top center that reads “Go Live”.



Presenting the Sample to be verified

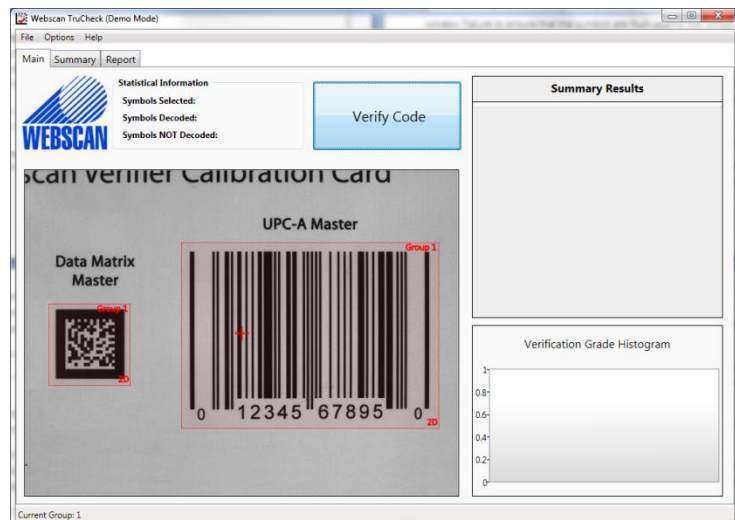
• In “Live Mode”, the camera will capture images and update the display several times every second. At this point, the symbols to be verified should be placed on the TruCheck™ Omni unit, face-down on the glass viewing window.

• Images of the sample to be verified will then be visible on the screen. Adjust the sample on the window so that all symbols to be verified are within the field of view, and that the sample sheet is flat and flush against the window. Failure to ensure that the symbols are flush against the window can result in poor verification results.

12.3 SELECTING REGIONS

• Select the regions to be verified. To do this, click and drag starting beyond the upper left corner of a symbol to be verified, and releasing beyond the lower right corner of the symbol. Repeat this for each symbol to be verified.

• If the region selected is approximately square, the selected region will be given the default settings for a 2D symbol region. If the region is more rectangular, the region will be given the default settings of a 1D region.



- Selected regions can be deleted by right clicking on a region, and selecting *"Delete"*. To delete all regions, right click in an area outside of any selected region, and select *"Delete All Selections"*.
- The layout and group affiliation of regions on the screen can be saved and recalled at a later time. This is useful if similar samples are frequently verified. To do this, layout the regions and assign groups as desired, and then select *"File->Save Setup"*. This will save a setup file that can be restored at a later time.
- To restore a saved setup file, select *"File->Open Setup"*.

12.4 ADJUSTING SETTINGS

- With the regions selected, decode settings must be selected to match the intended application. Settings can be adjusted by right clicking inside a selected region, and selecting *"Settings"*.
- Settings are common among all regions that are part of the same group. By default, all regions selected will belong to the same group, so if a large number of symbols are to be verified using the same settings, it is only necessary to change the settings on one of the regions.
- Regions are always set as either *"1D"* or *"2D"*. This determines if the region will be searched for 1D or 2D symbols upon verification. This is a setting like any other, so changing this setting for one region will apply the change to all regions in that region's group.
- If two regions that are in the same group need to be verified with different settings, then it is necessary to move one of them to a different group. To do this, right click on the region and select *"Switch to Group->New Group"*.
- This will create a new group with this region as its only member. More regions can be added to this group by instead selecting *"Switch to Group->"* and selecting the appropriate group.
- Groups are color-coded; regions that are of the same color are members of the same group. The settings for each group apply only to the regions that are members of that group.
- When selecting regions, approximately square regions are created as 2D regions, and rectangular regions are created as 1D regions. If a 1D region is created when previous regions were 2D, then the newly created region will be put into a new group, and vice versa.
- Once the settings for all groups have been established, the global settings can be set. These settings can be accessed by selecting *"Options->Settings"*.
- The global settings are used for record keeping and reporting purposes. It is in these settings that user information can be set and digital copies of the reports can be saved. For more information on the use of these settings, please see the user guide, available in the Webscan Inc. folder in the start menu.

12.5 VERIFYING THE SYMBOLS

- Now that all regions have been selected and settings have been set, the symbols can be verified. To do this, press the button that reads *"Verify Code"*. Note that this is the same button that read *"Go Live"* before.
- The verification process will proceed to verify each region, according to that region's settings. This may take a moment. To help the verification process complete quickly, make sure that all regions contain a symbol.

12.6 VIEWING RESULTS

- Once verification has completed, there are several tools available to help to analyze the results of the verification process.

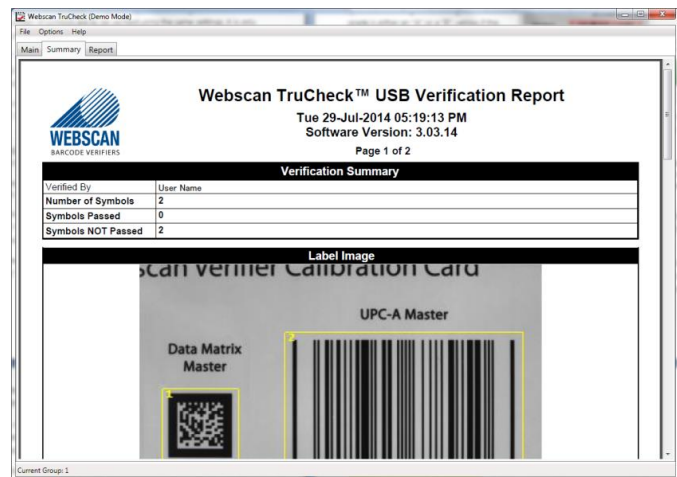
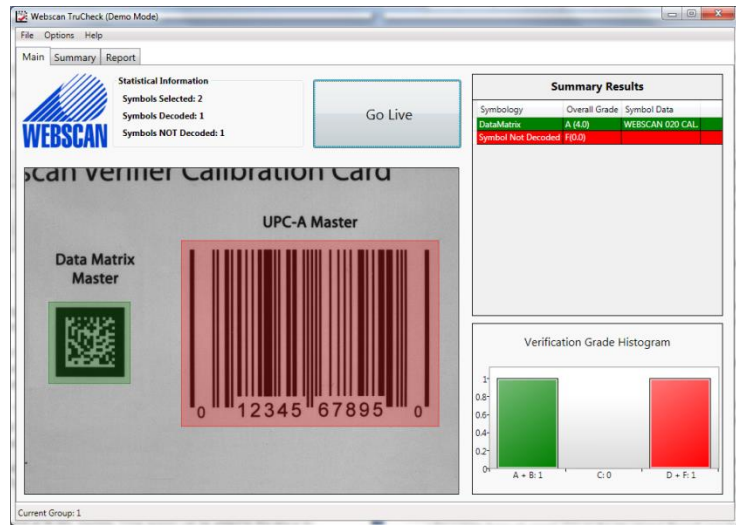
- First of all, each region will no longer be colored according to its group affiliation, but rather according to grade of the verified symbol within. Regions will be green if the grade is either an "A" or a "B", yellow if the grade is a "C", or red if the grade is "D" or "F".

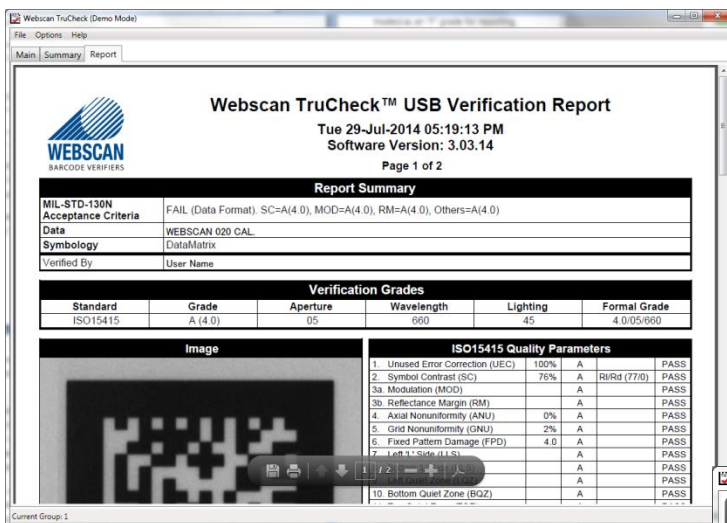
- It is important to note that the region will be red if no symbol is decoded. "NO DECODE" is treated as an "F" grade for reporting purposes.

- To view a quick overview of the performance of the decoded symbols, there is a chart in the lower right hand corner labeled "Verification Summary". This chart will show the relative frequency of the three grade categories (green, yellow, red) as described above.

- To access a printable summary report, click on the tab near the top left of the screen labeled "Summary". This is a printer friendly report that summarizes the results of the verification. The report will begin with some information about the results of all regions combined, indicating the number of each grade received, then a small subsection for each region, including basic information for each symbol.

- For a more thorough report, click on the tab labeled "Report" near the upper left. This will include a detailed report for every region, including information about the symbol's overall grade and all other information that was selected in the settings menu.





- Like the summary report, these reports are also printer friendly. To print the report, right click on the report, and select "Print Report".
- These detailed reports are an ideal way to keep and maintain a record of verification results, as they will contain all information relating to acceptance criteria, as well as a date and time to establish when the verification was completed. Note that what information is reported here is controlled by both the settings for the region and the global settings.

• Results can also be reviewed on screen, and can be accessed either by double clicking on a region or by double clicking on the row of the "Summary Results" table on the upper right. This will create a popup window with detailed information about the symbol that was decoded.

• There are several tabs and buttons available in this window, and they function exactly as they do in "Single Mode". For information on what information is presented in these tabs, please see the user guide, available in the Webscan Inc. folder in the start menu.



12.7 RESET

• Once the results have been reviewed, and all desired reports have been printed, press "Go Live" to return to the state where new symbols can be presented, and the selected regions can again be modified.

13.1 LASER SAFETY INFORMATION

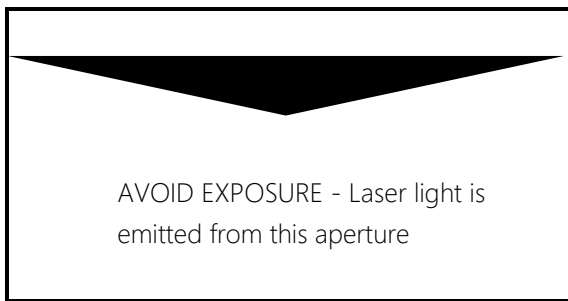
This section contains essential information to properly install, operate and maintain your Webscan TruCheck™ Laser USB Barcode Verifier.

13.2 CDRH COMPLIANCE STATEMENT

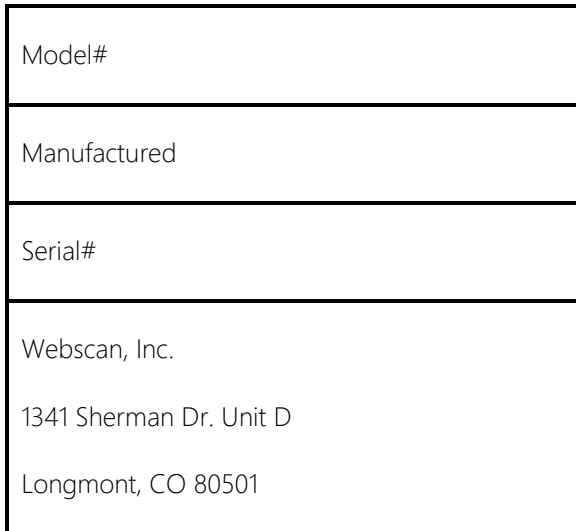
The Webscan TruCheck™ Barcode Verifier complies with standard 21CFR1040.10.

Caution - use of controls or adjustments or performance of procedures other than those specified herein may result in hazardous laser light exposure. The type and location of warning labels that comply with the CDRH standard are illustrated below:

The label below indicates the location of the aperture through which laser light is emitted.



The label below is located on the bottom of the unit and indicates the Model Number and Date of Manufacture:



The label below indicates that this product is a Class II laser device and contains the FDA Class II Warning logotype:



The label below contains the FCC Compliance Statement, the CDRH Compliance Statement and the caution statement for protective housings without interlocks.

This equipment complies with Part 15 of the FCC rules. Operation is subject to the following two conditions: (1) This device may not cause harmful interference, and (2) This device must accept any interference received including interference that may cause undesired operation.

Complies with 21CFR1040.10

CAUTION - Laser light when open. DO NOT STARE INTO BEAM.

13.3 FCC CLASS "A" STATEMENT

This device complies with Part 15 of the FCC rules. Operation is subject to the following two conditions: (1) this device may not cause harmful interference, and (2) this device must accept any interference received, including interference that may cause undesired operation.

13.4 ROUTINE CARE AND MAINTENANCE

Besides periodic calibration, your Webscan system requires a minimum amount of care and maintenance. In a very dusty environment, it is necessary to clean the window surface from time to time. It is recommended that you use a soft cloth, similar to the type used on eyeglasses or camera lenses. Warm water may be used along with a gentle cloth. Slowly wipe up and down making sure to clean the entire width of the window.

WARNING!!!

NEVER USE A DETERGENT WITH ANY ABRASIVE CONTENT!

BE CAREFUL TO NOT SCRATCH THE WINDOW!

13.5 ENGINEERING SPECS

ACCURACY TO INDUSTRY STANDARDS:

Accuracy of the optical parameter measurements are to ISO15426 (Barcode Verifier Conformance Specifications), as follows:

For 1D test symbols, the arithmetic mean of the measurements on 10 scans on a Primary Reference Test Symbol shall be within Decodability: $\pm 8\%$, Rmin: $\pm 3\%$, Rmax: $\pm 5\%$, Defect: $\pm 8\%$, Modulation: $\pm 8\%$.

For 2D test symbols, a Primary Reference Test Symbol shall be within Rmin: $\pm 3\%$, Rmax: $\pm 5\%$, UEC $\pm 0\%$, Grid Nonuniformity $\pm 6\%$, Axial Nonuniformity $\pm 2\%$, Contrast Uniformity $\pm 8\%$, Fixed Pattern Damage within calibrated grade

boundaries. These must be tested with 80% aperture per the GS1 Data Matrix Calibrated conformance standard test card.

NOTE: The units of the tolerance are percentage of 100%, in other words reported units, not percentage of the reading. Example: For a Test Symbol with decodability of 88%, a reading in the range 80% through 96% is within these tolerances. In most cases, measurements are more accurate than those stated above.

RESOLUTION AND RANGE:

a. Final Quality Grade: Scale of 0.0 to 4.0, to a resolution of 0.1.

b. Individual Parameters: Reported on a scale of 0 to 100 with resolution of 1. The resolution of measurement is not an indication of accuracy.

CALIBRATION TO INDUSTRY STANDARDS:

Refer to of ISO/IEC 15426-1 and ISO/IEC 15426-2.

All TruCheck models have a means of calibrating reflectance values against reference reflectance calibration samples. Two calibration points are used, one near the high reflectance end of the range and the other near the low reflectance end of the range. The reflectance calibration target specified by Webscan is the GS1 Calibrated Conformance Standard. This NIST traceable standard is a product of GS1, and is available through Webscan, Inc. or from GS1 directly.

The calibration procedure specified by Webscan, Inc. is documented in the [9. Calibration](#) section earlier in this manual.

ENVIRONMENTAL:

Temperature 0-40° C, Humidity: 5% - 95% non-condensing

14.1 COMPLIANCE STATEMENTS

The following pages contain compliance certificates for existing Model numbers of TruCheck barcode verifiers as of the time of publishing of this manual. Contact Webscan if your model is not listed.

Webscan certifies that the following product models:

TruCheck Omni Series:

Model# TC-830, TC-839, TC-836, TC-833, TC-827, TC-832, TC-840, TC-846

TruCheck Optima Series:

Model# TC-829, TC-838, TC-835, TC-834, TC-842, TC-844

TruCheck 2D USB Series:

Model# TC-823, TC-831, TC-826, TC-821, TC-832

TruCheck 2D DPM USB Series:

Model# TC-824, TC-845, TC-825, TC-850, TC-853, TC-861*, TC-863*

TruCheck Laser USB:

Model# TC-843, TC-854, TC-841, TC-847, TC-837, TC-848, TC-857, TC-851, TC-855

Comply with GS1 system requirements for EAN/UPC Symbology, UCC/EAN-128 Symbology, ITF-14 Symbology, GS1 DataBar Symbology and GS1 Composite Symbology and GS1 Data Matrix.

And furthermore, with the following applicable ISO/IEC standards:

ISO 15415
ISO 15416
ISO 15426-1 and 15426-2
ISO/IEC TR 29158 (AIM DPM-2006)*

for

Code 128 (ISO/IEC 15417)
Data Matrix (ISO/IEC 16022) ECC-200 (up to 48x48 matrix size)
QR Code (ISO/IEC 18004)
Aztec Code (ISO/IEC 24778)
PDF 417 (ISO/IEC 15438)

And these products certify that bar codes comply with the GS1 Gen Spec, MIL STD 130 (L-N Chg1) for UID, and with the FDA Unique Device Identification (UDI) Regulation.

Evidence of compliance with the aforementioned standards and traceability to National Institute of Standards and Technology (NIST) is provided through the use of GS1 Certified Calibrated Conformance Standards which are manufactured to exacting specifications and test for conformance to ISO 15426 parts 1 and 2.

Webscan tests each unit for conformity within specified tolerances per ISO 15426 parts 1 and 2.

*TruCheck FlexHite Dome models are certified to comply with ISO/IEC 29158 only.

15.1 WEBCAN SERVICE

Webscan strives to provide our customers with the best available service and support in the industry. Our knowledgeable barcode experts are available to assist you with interpretations of verification results and use of the product or software features.

15.2 REPAIR/UPGRADE

If you need service for your TruCheck™ system, please call Webscan Technical Support at (855) 426-4639. Please be near the TruCheck™ system when you call and have your calibration card available. You may be instructed by Webscan to calibrate the system or to go into the "Advanced" menu in an effort to find and/or fix the problem. If factory service is required for the system, you will be given an RMA # (Return Material Authorization Number) that Webscan will use to track and record service activity.

You do not need to ship your power supply unless instructed. Please reference your RMA number on your PO and shipping documents. You can apply for an RMA number on our website, under the resources tab.

The address to send equipment to is:

Webscan
Attn: RMA# _____ (put in your assigned RMA#)
4990 Pearl East Circle Suite 300 Boulder CO 80301
Tel (855) 426-4639

15.3 TROUBLESHOOTING

If you are having trouble with your Webscan system, please check a few basic things.

1. Turn the system off, then on. See if this corrects the problem.
2. Make sure the system is not in Negative Mode, unless you are in fact trying to verify a Negative.
3. Calibrate the unit. After calibration, verify the calibration barcode. See if the values given by the system match the values for the calibration card.
4. Make sure the Red Cross on your monitor is located within the Data Matrix symbol.
5. If you are not getting the LED's to illuminate, be sure the power brick is connected well to the power cable.

If these actions do not correct the problem, please call Webscan Technical support as described below.

Phone: (855) 426-4639 Email: support@webscaninc.com

NOTE: It is often helpful to save diagnostic information using the "Debug Information" feature in the "Help" menu for email to support@webscaninc.com.

15.4 RETURN POLICY

New products returned to the factory within 14-days of receipt and in like new condition and packaged in the original packaging will be refunded or credited at full price minus shipping. Products returned after fourteen days will be refunded or credited with a 15% restocking fee. Units older than 45-days are not eligible for a refund. If a unit is returned and found to have damaged and/or scratched parts, the value of the parts and labor required to bring the verifier back

to a like new condition, will be deducted from the refund or credit. Calibration cards are not eligible for a refund, exchange or credit.

NOTE: The 14-day return time frame is from the date of customer's receipt of merchandise to the return ship date.

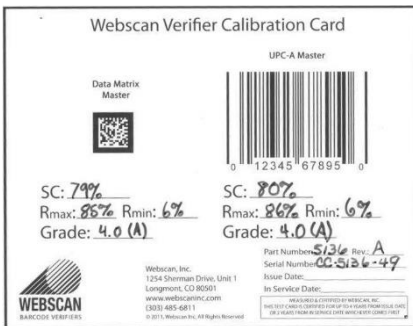
15.7 FCC CLASS "A" STATEMENT:

This device complies with Part 15 of the FCC rules. Operation is subject to the following two conditions: (1) this device may not cause harmful interference, and (2) this device must accept any interference received, including interference that may cause undesired operation.

15.8 PURCHASING A CALIBRATION CARD

Calibration Cards expire after 2 years from the date of issue. Calibration is important for industry standard compliance. If your calibration card is expired, contact [Webscan](http://www.webscan.com) for purchasing information.

NOTE: If you have a 2D verifiers (such as a TruCheck Optima or TruCheck Omni), you can choose either a "2D Calibration Card" or a "Linear Calibration Card". Either of them will allow you to calibrate the reflectance levels which is what calibration does. Importantly, calibration is not specific to the symbology and once the verifier is calibrated using either type of calibration target, the verifier is calibrated for both 1D and 2D barcodes. However, for 1D verifiers, such as TruCheck Laser USB which do not work on 2D barcodes, only a "1D Calibration barcode" can be used.



The Webscan calibration card (part number 5136) contains both types of calibration target symbols and can be used to calibrate either 1D or 2D verifiers. The calibration target symbols on the Webscan Calibration Card are "Master" Symbols, similar to the master symbols on the GS1 UPC/EAN Card and GS1 Data Matrix Card. However, this card contains Master Grade Symbols only and does not contain intentionally produced "Conformance Test Symbols" with low grades. Meaning the Webscan calibration card can be used to calibrate and check your calibration values (Rmax and Rmin).

Besides Calibration, many of the calibration target cards below can also be used for "Conformance Testing". Conformance Test Symbols are barcodes produced with intentional defects that give lower than perfect grades. The GS1 Data Matrix calibration card contains Data Matrix symbols with intentional imperfections that you can measure with the verifier to check the reporting capabilities of the verifier and to document conformance to industry standards such as ISO/IEC 15415 and ISO/IEC 15426-2 and GS1 specifications. The GS1 UPC/EAN Card contains UPC/EAN symbols that contain intentional imperfections that you can measure with the verifier to check the reporting capabilities of the verifier and to document conformance to industry standards such as ISO/IEC 15416.

Other industry standard calibration cards with linear (1D) barcode conformance tests are available. Call Webscan for more information, 855-426-4639.



15.9 SEMINAR SERVICE

The Webscan Barcode Seminar is a comprehensive learning course in barcode technology aimed at packaging engineers, graphics artists, and other professionals involved in the production of barcoded packaging. Whether you are new to barcoding or have been involved for years, if you want to truly understand the inner workings of barcodes, especially the newer symbologies such as GS1 DataBar (formerly RSS14), Data Matrix, Composite Symbology, and PDF 417, this seminar is for you!

Taking you from the most basic concepts of barcode technology all the way through to the most advanced topics such as the actual methods used to scan, decode, and verify all types of barcodes, you will become an expert and a resource to your company.

The course is broken into two main parts. The first, Basic Concepts, begins by introducing the basic elements that barcodes are composed of. A vocabulary of barcode terms is developed as the course progresses. The fundamental methodology used to verify barcodes is explained in detail. Also, the structure of common barcode symbologies such as Code 39, Interleaved 2 of 5, and Code 128 is explained in detail, including the mathematical methods used to decode them. The UPC or Universal Product Code is also fully explained along with several variations of the basic UPC symbology such as UPC-E, EAN-13 and EAN-8. The use of special encodation such as GS1/UCC/EAN-128 with Function 1 characters and Application Identifiers (AI's) is also described.

The second part of the course consists of advanced topics such as new 2D symbologies. The new GS1 DataBar and GS1 Composite Symbology family is explained fully, from the goals it seeks to achieve to the various formats allowed. Each of the GS1 DataBar formats, such as GS1 DataBar Limited, GS1 DataBar Stacked, GS1 DataBar with Composite, and many others are fully described, including character structure, check digit calculations, and data content. Data Matrix (ECC200) and PDF 417 are also fully described including structure, decoding methods and quality verification. The quality verification described follows the ISO15415 specification.

Attendees will come away from this seminar with an understanding of the relationships between symbologies and the benefits of different symbologies as well as the challenges presented by each symbology to those involved in producing or scanning the codes. Attendees will be able to decipher truth from fiction in the marketing claims of vendors when in the process of evaluating products and be able to troubleshoot problems with barcode printing or scanning systems after implementation. The seminar can be customized to focus more on certain topics of special interest to the intended audience and less on other topics.

15.9.1 WHAT THIS SEMINAR IS NOT:

This seminar is not about the end use of barcodes such as in retail settings or warehouses. Although it is about the core technology of barcodes used in these settings, this course does not go beyond printing and reading the barcodes. This is also not about how to use any specific hardware or software.

For information about arranging for the Webscan Barcode Seminar to be presented at your company, including pricing, please contact Webscan toll free at 877-WEBSCAN.

Webscan Validation Overview & Objective

Pharmaceutical and medical device manufacturers are very concerned about quality in the manufacturing and packaging of their products as part of their public health responsibilities. FDA regulations and guidance in addition to internal quality and professionalism standards drive part of the concern. Webscan fully supports our customers in their quest for best achievable quality in manufacturing practices.

The FDA has issued many documents offering guidance on computer software validation principles generally directed to medical devices. More specifically "General Principles of Software Validation; Final Guidance for Industry and FDA Staff" was issued on January 11, 2002. It is Webscan's goal to be fully compliant with FDA guidance on validation principles.

The Webscan validation protocol is designed to help ensure the highest quality standards are being met and follows the previously mentioned guidance. This validation protocol is expected to be used in combination with the customer's own quality systems to assure themselves and FDA inspectors that their manufacturing practices meet quality and health standards. Please contact Webscan for more information if Validation applies to you.

16. SYBOLOGY SPECIFIC VERIFICATIONS

This section contains information about specific symbologies and points out specific parameters that will be reported particular to that symbology.

16.1 UPC/EAN



UPC/EAN is a family of linear barcodes used at point of sale. The structure of a UPC/EAN barcode consists of leading guard bars, central guard bars, and trailing guard bars. The data characters consist of 4 elements comprising 7 unit modules, which encode digits 0-9. UPC codes encode 12 digits and EAN codes encode 13 digits. The first digit in an EAN barcode determines the GS1 country code of the country that the company is based.

It is customary to report the size of a UPC/EAN symbol in terms of magnification, not by X dimension. Therefore, when UPC/EAN symbols are verified, the General Information section will contain a parameter called "Magnification". (Note: A 100% Magnification UPC symbol has an X dimension of 13 MILS, or .013 inch).

16.2 C128



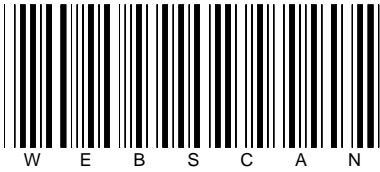
Code 128 is a very common and popular linear symbology. It has been adapted for use with the GS1 system, and barcodes utilizing the GS1 format of Code 128 are known as either UCC/EAN-128 or now GS1-128. A GS1-128 barcode contains a Function-1 character immediately after the start character.

The structure of a Code 128 barcode consists of a start character, a variable number of data characters, a check digit character and a stop character. Each character consists of 6 elements (3 bars and 2 spaces) comprising 11 modules, except the stop character which contains an extra bar at the end which serves to close off the last space of the stop character. Data is encoded in one of three character sets (referred to as character Set A, B, and C), allowing for double density numeric encodation as well as encoding all possible ASCII characters (ASCII values 0 through 127). Code 128 is embodied in many application specifications, including barcode GS1-128 symbology (formerly UCC/EAN-128).

The Code 128 symbology can encode data using three different "character sets" or more specifically, mappings between symbol characters and data characters known as Character Set A, Character Set B, and Character Set C. The Data Detail Tab will show the encodation of Code 128 symbols, displaying each symbol character and the corresponding data encoded. The particular start character that was used, control characters that switch between character sets, check digit, and stop characters are all shown. The data encoded uses the two-character notation for unprintable ASCII characters defined in Decoded Data ASCII Code Representation.

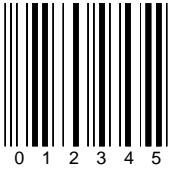
For Code 128, the element widths will contain a summary showing minimum, average, and maximum values for one, two, three, and four module bars and spaces separately, as well as the measured elements' widths and deviations from nominal.

16.3 CODE 3 OF 9



Code 39 is a discrete two-width symbology composed of characters containing nine elements, three of these nine being wide elements. The wide elements are a fixed multiple of the narrow element width. The multiple should be in the range of 2 to 3. This multiple is commonly referred to as the "Ratio" and is reported in General Characteristics. The TruCheck also supports TLC 39. TLC 39 is a variant of Code 39 created to support a linked composite component for Telecom applications.

16.4 INTERLEAVED 2 OF 5 (I2OF5)



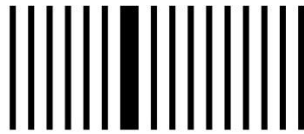
Interleaved 2 of 5 is a continuous two-width barcode symbology. ITF 14 is a GS1 form of I 2 of 5, and the TruCheck™ USB software will evaluate symbols encoded according to selected standards, either I 2 of 5 standard, or GS1 – ITF14. In order to select which standard is applied, there is a drop down menu box in the decode options of the settings window. Since Interleaved 2 of 5 is a two-width symbology, ratio will be reported in General Characteristics.

16.5 CODE 93



Code 93 is a linear symbology composed of characters made up of six elements fit into 9 modules.

16.6 PHARMACODE

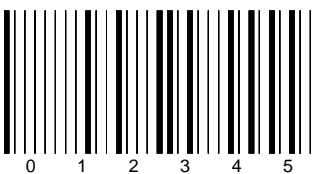


Pharmacode symbols (also known as "Laetus Pharmacode" are linear symbols that contain no start/stop characters. By default, the TruCheck™ verifier will not detect Pharmacode symbols, so if Pharmacode symbols are to be verified, there is an option in the "type of code" section of the settings menu that must be checked. It is recommended that you

activate this setting only when needed, because stray marks and other types of symbols can sometimes have the proper spacing to qualify as a valid Pharmacode symbol. This issue can be avoided by turning off Pharmacode whenever Pharmacode symbols are not being verified.

Due to the lack of any start character or other means to determine the forward direction of the symbol, a Pharmacode symbol can read differently in each direction. Therefore, the data in a Pharmacode symbol is reported twice, in both the data field of the main screen, as well as the data detail tab. An "F", expressing the data as interpreted by a foreword scan, indicates the first. The second is indicated by an "R", indicating the data as interpreted by a reverse scan.

16.7 MSI/PLESSEY



MSI and Plessey codes are continuous binary symbologies in which data is encoded by groups of 4 bars and four spaces. Each bar/space pair represents a one or zero based on whether the bar or space is wide while the other is opposite. Groups of four such "bits", form a character. There is a check digit at the end, which can be displayed or removed from the data on the report depending on a settings choice.

16.8 PDF 417



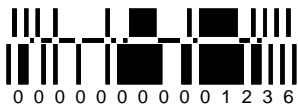
The design of PDF 417 provides for the symbol being “line scanable”. First, each row is composed of self-clocking characters, much the same way as an ordinary linear barcode. The ‘417’ in the name of the symbology comes from the structure of each character. It is 8 elements (4 bars and 4 spaces) arranged within 17 unit modules. (The ‘PDF’ part of the name stands for ‘portable data file’ and suggests that the data

capacity of the symbol is large enough to represent all of the data associated with the item that the label is on, as opposed to a number that refers to a record in a non-portable data file (such as a price look table) in a computer database.

Each row can be read in a way that is similar to the process of reading a linear barcode. However, each row further contains a special character at each end (adjacent to the start and stop characters) which identify the row number within the symbol for this row. There is also other information in these special characters, including the total number of rows and the total number of columns in the symbol. In this way, a scan of a PDF 417 symbol can yield part of the decode information of the symbol which can be combined with other scans (of the other rows) to result in a complete decode. Thus, PDF 417, like other multi-row stacked symbologies are “line scanable”.

For PDF 417, the number of rows and columns (in the data section, not including the row indicator columns) will be given in the General Characteristic’s section, along with Error Correction information, such as Error Correction Level (which can be 0 through 8), Error correction budget, number of errors and erasures. In addition, the scan-reflectance-profile grade for the start and stop characters is given in General Characteristics for each in tracing the cause of the final grade. General Characteristics will also contain the Aspect Ratio which is the row height divided by the module size. (Thus, a symbol with row height that is 3X will have aspect ratio of 3). Also, a Compact PDF 417 symbol (one with its right row indicator and stop character) will be noted in General Characteristics.

16.9 GS1 DATABAR (FORMERLY) RSS



GS1 DataBar is a linear symbology that can be printed in multi-row stacked forms in many cases. Even GS1 symbols that have only 1 linear component should be treated as stacked symbols for the purposes of setting up a scan region. GS1 DataBar must be enabled in the “type of code” section of the settings menu. The “# of scans” option in the settings menu has no effect on GS1 DataBar symbols; the appropriate number of scans will be decoded according to the technical specifications, and is typically ten per row, or composite section of the overall code.

The reporting for RSS symbols is different from other symbologies when there is more than one component. Each component has its own grade. The grade of each component will affect the grade for the whole symbol, where the overall symbol grade is the lowest grade scored by any of its components. It is important to note that there is a special flag inside the data of RSS codes that identifies the presence of a secondary component. If this flag is set when there is no composite component found, the grade for the symbol is reported as “F” even if all other parameters receive high grades. This is reported as “link flag set, but composite component not found” in the primary report. The report will contain “Link Flag On” or “Link Flag Off”. The report will also indicate whether the symbol is printed in one row, or “stacked”.

16.10 QR



QR Code, or Quick Response Code, is capable of encoding Japanese Kanji characters and is widely used in Asia. It contains easy to decode finder patterns, alignment patterns, and clock tracks. A small amount of version information is specified by a group of modules surrounding the finder patterns, such as the size of the matrix and the selected level of error correction. QR Code symbols can have varying amounts of error correction, allowing a tradeoff between symbol size and error correction capability to be made when the symbol is created. The general characteristics section will include information specific to QR Code, including the error correction mode and the masking pattern.

16.11 DATA MATRIX CODE



The Data Matrix symbology is probably the most common 2D Matrix. It allows for the highest density of data per module, especially for small symbols, so data matrix grading is essential. The finder pattern consists of solid left and bottom sides, which form an “L” pattern and a horizontal and vertical clock track on opposite sides of the “L”. The clock track tells the number of modules in the matrix and is used to decode the grid on which the modules are placed. There is no version information encoded explicitly within the Data Matrix symbology; all the information about the symbol size, encoding and error correction is determined from the size of the matrix. The matrix size shown in the general description section of the report will give the size of the matrix including the “L” patterns and clock tracks, and the size of the inner matrix of data encoding modules in parenthesis.

16.12 MAXICODE



MaxiCode is a 2D hexagonal grid symbology. “MaxiCode” must be selected in the “type of code” section of the settings menu to decode MaxiCode symbols. Unlike most other barcoding symbologies, all MaxiCode symbols have a necessary specified size. Magnification or shrinkage of the symbol can cause a symbol to become unreadable, even if all elements are properly sized relative to each other. Magnification is not a graded parameter; however, magnification percentage will be reported in the general characteristics tab, along with a warning if the symbol is of a size not allowed in the specification.

Data in MaxiCode symbols is encoded across 3 different channels, each with its own independent error correction budget, and each with a different intended interpretation. These three channels are referred to as the high priority message, and the first and second low priority messages. The error detection and correction information for each channel will be listed separately in the general characteristics tab.

MaxiCode symbols can be encoded in any of 5 modes:

Mode 2—Mode 2 is often used in the shipping industry and it uses the high priority message to store structured information, including a numeric postal code, a country code, and a service class. The two low priority channels interleave to form an accompanying message. The high priority channel uses “enhanced” error correction, and both low priority channels use “standard”.

Mode 3— Mode 3 is often used in the shipping industry and it uses the high priority message to store structured information including an alphanumeric postal code, a country code, and a service class. The two low priority channels interleave to form an accompanying message. The high priority channel uses “enhanced” error correction, and both low priority channels use “standard”.

Mode 4—Mode 4 uses the full data capacity (including the high priority message channel) to encode a message. The high priority channel uses “enhanced” error correction, and both low priority channels use “standard”.

Mode 5—Mode 5 uses the full data capacity (including the high priority message) to encode a message. In mode 5, all channels use “enhanced” error correction. This means that mode 5 symbols have a greater error detection and correction capacity, but at the cost of a smaller data capacity compared to mode 4 symbols.

Mode 6—Mode 6 symbols encode data used to reprogram reading devices. The high priority channel uses “enhanced” error correction, and both low priority channels use “standard”.

16.13 AZTEC



Aztec Code is a 2D symbol with a bull's-eye pattern at the center to locate the code. The orientation marks at the corners of the code allow the code to be read if rotated in any direction. With an Aztec Code reader, the amount of Reed-Solomon error correction is between 20% and 40% of the data in the code. Like other 2D Matrix symbologies, the size of the Aztec Code depends on the amount of data contained within the code.



WEBCAN

BARCODE VERIFIERS

